

# RED POLL JOURNAL

*Beef*

SPRING 2017

VOLUME 73 / NUMBER 2



## *Featuring...*

Junior Preview Show  
National Meeting & Sale

Scan this QR code on your  
Smartphone to learn more at  
[www.americanredpolls.com](http://www.americanredpolls.com)



# WIESE FARMS



NWOC SS LEGACY shown here at 4 years of age & weighing 1800 lbs. We have been using Legacy successfully for 3 years. He has given us moderate size calves with good muscle expression. We will have sons & daughters from him for sale this summer.



Announcing our junior herd sire, Cat Creek Sizemore, pictured here at 14 months. He will be assigned to breed our heifer replacements this January. We purchased "Sizemore" as Lot 62 at the National Sale in September at Murray State College where he was bred and consigned by Carson Farms of Statesville, NC.

Wiese Farms purchased their first Red Polls in 1927 and they have been a part of our lives and our farming and ranching success ever since. Red Polls have many fine qualities to contribute to the beef business.

Our hope for the future of the Association is that more people come to recognize the mothering ability, the docility, the ability to do well under adverse conditions, and the quality of the finished product for the consumer that is inherent in our Red Poll breed.

Wiese Farms encourages all breeders to register their females and bulls kept for breeding, and transfer all they sell. We support Complete Herd Reporting to advance the quality of our herd and the breed, and encourage everyone to send in all carcass information that you are able to obtain.



The yearling heifers pictured here are two that we have for sale. They are being bred to Cat Creek Sizemore to calve in March of next year. We will be glad to send you pictures and information on the bred heifers and also the heifers and bulls we will be weaning in July!



## Wm. Wiese & Family

Bill and Angie Wiese & Brian and Jill Hiebert

12214 E. Parallel Road, Haven, KS 67543 • (620) 465-3865 or (620) 802-2169 • e-mail: wmwiese@gmail.com

# J JACKSON FARMS J

HERD SIRE:  
JF SONNY BOY

DOLL'S 4C®  
PIKEVILLE

HILL TOP TM  
EXPO



SETTING THE DIRECTION FOR  
RED POLLS SINCE 1949



The Farm welcomes  
The 15<sup>th</sup> International  
Red Poll Congress

JIM JACKSON, Herdsman  
2904 N WASHINGTON ROAD  
GREENS FORK, IN 47345  
765-586-0198  
jjackson@tdsdrive.com

TERESA JACKSON, Owner  
2131 N WASHINGTON ROAD  
GREENS FORK, IN 47345  
765-914-1298  
jackson.bill.teresa@gmail.com

JOE JACKSON, Manager  
4398 S 300 E  
WARREN IN 46792  
260-519-5286

# SPEGAL'S Red Poll CATTLE

Red Poll Herd Since 1954

## Utilizing these Red Poll Bulls

### **Dunroamin Premium**

205 day wt. 725 lb. 365 day wt. 1,434 lb.  
Believed to be the heaviest yearling Red Poll bull of all time. Gain from birth to weaning was 3.2 lb./day, and gain from weaning to yearling was 4.43 lb./day.  
Calved 2/13/90 Reg. #5990  
S: P-P Hoosier Prelude GR31 D: Dunroamin Bones Pearl GR23  
EPDs: BW 0.0, WW -9, YW -12, M 8

### **JF Big Bucks**

Calved 5/26/12 Reg. #212687  
S: JF Sonny Boy D: Doll's "A" Katrina  
EPDs: BW 1.3, WW 10, YW 17, M 5

### **Esquire's Navigator**

Calved 9/18/07 Reg. #210052  
S: Esquire's Rolex D: Esquire's Dis Mandy  
EPDs: BW 3.1, WW 18, YW 27, M 4



*Thank you to our buyers from the Kentucky Beef Expo; Handwork Farm and Avalon Farms for their purchases!*

**Visitors  
Welcome**

**Gail Spegal & Family**  
6902 N. 400 W., Fairland, IN 46126 • (317) 835-7617

**Inquiries  
Appreciated**

## Advertising in the Red Poll Beef Journal

What better way to reach potential buyers than to advertise in the Red Poll Beef Journal. Advertising increases sales which will increase profit!



If you as the advertiser would like a graphic art ad, the ARPA office can design the ad for you, however, there will be an additional charge.

If you as the advertiser would like to take care of the ad yourself, be sure to contact the office for mechanical measurements of the ad.

A camera ready ad in JPEG or PDF format will need to be provided to the office by ad deadline. Ads are re-run as presented in the previous issue unless the advertiser wishes to make changes and does so prior to the ad deadline.

# RED POLL *Beef* JOURNAL

The Red Poll Beef Journal is the official publication of the American Red Poll Association

## Table of Contents

Page 5	From the President
Page 6	Calendar of Events
Page 7	Secretary Report
Page 8	What is Grass Tetany & When are Cattle Most Likely to Have it
Page 10	World Tour Updates
Page 11	Junior News Stop
Page 14	6 Reasons Livestock Projects are Proven to Raise Great Kids
Page 16	Board News
Page 16	Banquet
Page 17	73rd National Sale
Page 18	Affiliate Association News
Page 20	The Benefits of Grass Fed
Page 23	A Breeding Soundness Exam on Your Bulls
Page 24	AI Approved Sires
Page 25	How Does a Bull Become AI Approved
Page 26	New Members
Page 27	First Time Buyers
Page 32	Pinkeye: Early Detection and Action Recommended This Summer
Page 33	Index of Advertisers

**Cover Photo — The Joys of Spring, photo by Lee Hartsell**



**Absorbing the Sun!! Photo by Michael Reed**

**Red Poll Beef Journal** is published three times yearly and is the property of the American Red Poll Association. No part of this publication may be reproduced or transmitted in any form or by any means, electronic or mechanical, including photocopying, recording or by any information storage and retrieval system, without permission of the publisher. The contents of ads and editorial contributions are not necessarily the opinion of this publication or the American Red Poll Association. **Red Poll Beef Journal** hereby expressly limits its liability from any and all errors, misprints and/or all other inaccuracies in the advertisements and editorial content, and said liability is thereby limited to a correction of the error in the issue of **Red Poll Beef Journal** which follows written notice by at least 30 days. In no case shall the space allowed for corrections exceed the original space of the error. **Red Poll Beef Journal** is sent free of charge to all members of the American Red Poll Association who have paid yearly service fees to the Association. Subscription rates are: 1 year - \$25.00 per year. Checks should be made payable to the American Red Poll Association and sent to 11523 Violet Avenue, Stockport, Iowa 52651.

### 2017 ARPA Fees

#### Normal Registrations

Under 12 months of age	\$25
12-24 months of age	\$30
Over 24 months of age	\$40

#### Complete Herd Report

Annual Cow Enrollment	\$5
Registration of CHR Calf	\$10

(Complete herd must be enrolled at the beginning of the year)

#### Transfers - all registration types

Within one month of date of sale	\$15
1 to 3 months from date of sale	\$18
Over 3 months from date of sale	\$25

### 2016-2017

#### COMMITTEES

##### Archives

##### Bylaws

James Campbell, Brian Fairchild

Jim Jackson

##### Chaplain

Brian Fairchild

##### Corporate Sponsorship

Jeff Wilkins

##### Finance

John Rager

Mary First, Leo Young

##### Grass Feeding Initiative

Jeff Wilkins, James Campbell

##### Juniors

Teresa Jackson, Becky Ebersole

Brian Shuter, Jeff Doll

##### Membership

Linda Hampton, Mike Reed

##### National Sale

Jeff Wilkins, Brian Fairchild

##### National Banquet & Seminars

James L Morrison, Kaye Gilbert

##### National Show

Jim Jackson, Brent Raines

Becky Ebersole

##### Nominations

Linda Hampton

##### Performance

Bob Carson

##### Publications

James Campbell

##### World Tour

Meredith McKee

Mary Jo & Dan Schmiesing



## From the President



### *The Red Poll Endowment Fund*

Many times in recent months I have been asked what the Endowment Fund is and why do we have it. I will attempt to explain its general history, its founding, and the reason for its existence.

In the sixties the American Red Poll Association was constantly running in the red, losing money each year. This caused major tensions within the membership, even leading to a split of the organization. Many dedicated breeders decided to remedy this. Using various means, they paid off the debts. They resolved to set up a fund to help insure this debt did not happen again. The result was the Endowment Fund. Donations were made with the pledge and stipulation on the fund, that the principal would never be spent except to buy very secure bonds or Certificates of Deposit. The interest generated from those bonds or Certificate of Deposits would be put into the general fund to help pay the general expenses. This has been our cushion and for many years kept the organization's treasury in the black.

Many members have donated to this fund. The splinter organization rejoined ARPA and put its treasury in the Endowment Fund. We have had many fund raising events, the most notable being the auction at our annual meeting. Some members donated all or part of the proceeds from National Sale entries. Erwin Thrill left a bequest of \$50,000 in his will. With the exception of Erwin, I have not mentioned any one person for two reasons. First reason being, I might accidentally forget someone. The second and most important reason is because a major portion of the fund has been donated by members, large and small, of ARPA who saw the need for this fund and then supported it with their contributions. Today the value of this account exceeds \$250,000. Very few organizations have this type of cushion and it is due to many dedicated Red Poll Breeders of the past.

If you have any questions about the Fund ask Leo Young, John Rager, or me. We feel strongly that this Endowment fund will insure the survival of our organization and thus the Red Poll breed that we all cherish.

*Dan Schmiesing, President*

## ARPA Board of Directors

### Terms Expire 2017

#### **Robert Carson**

211 Nixon Road  
Statesville, NC 28625  
704-657-5126  
carson\_bob@hotmail.com

#### **Linda Hampton**

7382 E 750 S  
South Whitley, IN 46787  
260-839-5652 260-578-5055  
lindara@straussvealfeeds.com

#### **Jim Jackson**

2904 N Washington Road  
Greens Forks, IN 47345  
765-586-0198  
jjackson@tdsdrive.com

### Terms Expire 2018

#### **Brian Fairchild, Vice President**

4394 Berkley Drive  
Everton, AR 72633  
870-754-9377  
carpenter.bkfairchild@gmail.com

#### **Dan Schmiesing, President**

5220 Philothea Rd  
St. Henry, OH 45883  
419-925-4883  
mardanacres@gmail.com

#### **Jeff Wilkins**

2100 Wilkins Road  
Burlington, NC 27217  
336-538-0888  
jdw.wilkshire@gmail.com

### Terms Expire 2019

#### **James Campbell**

14774 Shetland Rd  
Granby, MO 64844  
417-638-5000  
campbellcattleco@gmail.com

#### **J.L. Morrison**

3230 Wolwine Hwy  
Stuart, VA 24171  
276-694-0101  
design3@consultant.com

#### **Kyle Young**

6990 Dover Road  
Shelbyville, KY 40065  
502-722-5379  
akcattleco1@gmail.com

## American Red Poll Association

**Kaye Gilbert - Executive Secretary**

11523 Violet Avenue, Stockport, Iowa 52651  
(765) 425 - 4515 • americanredpolls@gmail.com  
www.americanredpolls.com

## The Red Poll Report!



E-Newsletter

Be sure to keep up to date with our monthly E-Newsletter!

Released at the beginning of each month, it is ARPA's way to keep in communication with you on a monthly basis.

If you are not getting it, contact Kaye at [americanredpolls@gmail.com](mailto:americanredpolls@gmail.com) with your current email!



**April 15**  
**Spring Journal Deadline**

**Mid May**  
**Spring Journal Released**

**July 15**  
**Fall Journal Deadline**  
**National Sale Entry Deadline**

**Mid August**  
**Fall Journal Released**  
**National Sale Catalog Mailed**

**December 15**  
**Winter Journal Deadline**

**Mid January**  
**Winter Journal Released**

## CALENDAR OF EVENTS

### June

June 1 Junior Preview Show Entries Due  
June 1-25 15th International Red Poll Congress and Tour  
June 23-25 Junior Preview Show  
Troy, Ohio

### July

July 15 Deadline for the Fall Edition & National Sale Entries Due

### August

August 9 Indiana State Fair Red Poll Show  
August 15-20 Fall Red Poll Beef Journal will start to arrive in mailboxes  
August 27 Kentucky State Fair Red Poll Show

### September

September 28-30 National Meeting & Sale  
Murray, Kentucky

### Advertising Rates for the Red Poll Beef Journal

Ad Size	Black & White	Color	Prime Spot**
Full Page*	\$220.00	\$295.00	\$325.00
2/3 Page*	\$165.00	\$215.00	\$250.00
1/2 Page*	\$145.00	\$185.00	\$200.00
1/3 Page*	\$115.00	\$135.00	\$150.00
1/4 Page*	\$80.00	\$100.00	\$120.00
5"	65.00	\$75.00	
4"	\$55.00	\$65.00	
3"	\$45.00	\$55.00	
2"	\$35.00	\$45.00	
1"	\$25.00	\$35.00	

*\*Additional set up fee by quote for any new ad or redesigned ad applies if the ARPA office designs the ad.*

*This fee will pay the designer and ARPA will retain a percentage of the fee for processing.*

*If the advertiser provides the ad, there will be no additional charge.*

*\*\*Prime Spots are key locations within the journal that will result in more exposure for the ad. Prime Spots are back cover, inside back cover, opposite back cover, inside front cover, opposite inside front cover.*

## A Message from the Secretary



The last few months have been busy, difficult, challenging, and long to say the least. I wish to thank everyone for the warm words, thoughts, and prayers on the passing of my Dad. He was one a kind that liked to laugh and tease.

There have been some exciting things from the office lately. ABRI, our registration host, has developed an updated system. I am in the process of testing this system and it will hopefully be up by the end of this month. You will probably not notice a huge difference when looking up pedigrees, but you will notice the forms have been updated. I have also written instructions for all the forms.

In addition, the plans are well under way for the National Sale. You all will be getting a packet in the mail the first week of June regarding the National Sale and Meeting in September. Within the packet will be entry forms, the new registration forms, information for the national meeting, banquet reservations, award nomination forms, and much more. This year's meeting, sale, and banquet will be one for the record books!! Happy Spring!!

*Kaye*



The American Livestock Breeds Conservancy is a nonprofit membership organization working to protect over 180 breeds of livestock and poultry from extinction. Founded in 1977, ALBC is the pioneer organization in the U.S. working to conserve historic breeds and genetic diversity in livestock.

### JOIN TODAY!

#### \$35 membership includes:

New member introductory packet; An annual copy of our *Breeders and Products Directory*; A listing in the directory; A subscription to *ALBC News*, a bi-monthly, full color 20-page newsletter providing information about rare breeds; Free classified posting on ALBC online classified; Special pre-publication prices on ALBC publications; Advice and guidance from ALBC's technical staff; and much more!

PO Box 477, Pittsboro, NC 27512 • (919) 542-5704

[www.albc-usa.org](http://www.albc-usa.org)

*On behalf of the entire Parks family, we would like to thank the American Red Poll Association for presenting Mike the Lifetime Achievement Award during the national banquet in Murray, Kentucky, prior to the National Sale last year.*



From Left to Right: Nate Parks (Silverthorn Farm), Jay Parks (Parkstyle South), Mike Parks (Parkstyle Farm), Mickey Parks (Parkwood Farm)



Martha Parks showing a Parkstyle Red Poll Heifer

*Life isn't about the animals. Life is about the beliefs and values passed down through generations.... ensuring that things are better for those yet to come!*

We sincerely hope that, as Red Poll Breeders, we have accomplished this challenge since joining the Association in 1945!

**Mike & Martha Parks**  
Crawfordsville, IN  
765-585-7157

**Mickey Parks**  
Wingate, IN  
765-918-6737

**Nate Parks**  
Rossville, IN  
765-230-0735

**Jay Parks**  
Germantown, IN  
765-672-5857

# What is Grass Tetany & When Are Cattle Most Likely to Have it?

by Michelle Arnold, DVM, University of Kentucky Ruminant Veterinarian

Grass tetany, also known as spring tetany, grass staggers, wheat pasture poisoning, winter tetany or lactation tetany, is due to a low level of magnesium (Mg) in the blood. The amount of magnesium in the blood is completely dependent on the amount obtained from the daily diet. Deficiencies occur most often in beef cows when they are nursing a calf and grazing young, green grass in early spring. Fast-growing spring pastures are high in potassium (K<sup>+</sup>) and nitrogen (N<sup>+</sup>) and low in magnesium (Mg<sup>++</sup>) and sodium (Na<sup>+</sup>). Affected cattle often have low blood calcium concurrently. Fall calving cows may also experience grass tetany during the winter months.



As the grasses grow, the high potassium (K<sup>+</sup>) levels are effectively diluted, so hungry stock should be kept off this pasture until it grows to at least 12 cm

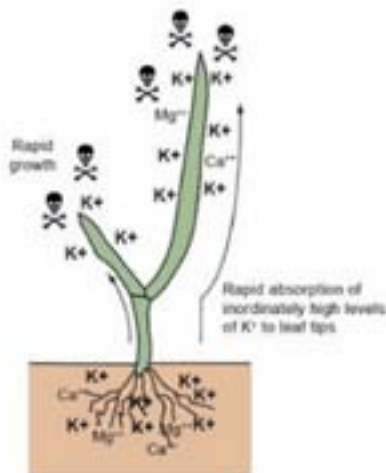


Figure 8. The culprit – first shoots of green grasses or cereal crop after germinating rain that contain high levels of potassium.

## Will Feeding Plain White Salt to Cows Prevent Grass Tetany?

This claim is shared every spring and, indeed, there are producers who do not have grass tetany that only feed salt. How can that be? Simply put, for those few lucky producers, the minerals available in their soils and forages are enough to meet the needs of their cows. A number of complex factors contribute to the ability of magnesium to be absorbed through the rumen (stomach) wall. Primarily there is a “pump” mechanism that actively transports the dissolved form of Mg across the rumen wall to

the bloodstream. This pump doesn’t work when potassium in the rumen is high and sodium is low because this changes the electrical potential necessary to drive it. Adding salt to the ration will improve Mg transport only when sodium is low in the overall diet. Too much salt will increase urination and cause magnesium to be lost in urine. Salt, as with any substance, can be dangerous and even fatal at high levels.

Research has shown that the negative effects of high potassium in early spring grass cannot be overcome by the addition of large quantities of salt. However, high magnesium mineral mixes prevent grass tetany by allowing magnesium to passively flow into the bloodstream of the cow without the need for the active transport pump.

## Has Limited Amounts of Salt in Mineral Mixes led to an Overconsumption of Minerals?

Regional soil types, soil fertility and different forage species result in different mineral intakes for grazing livestock on every farm. A blanket statement disregarding these factors is oversimplifying a very complex situation. Trace minerals such as copper, selenium, and zinc are all essential nutrients vital for proper

growth, production, and immune system function. Trace mineral deficiencies are extremely common in Kentucky and can predispose animals to serious and sometimes fatal disease conditions. Interactions occur between all of the various metals, minerals, and other elements in the diet, and optimal amounts of all elements are essential for proper nutrition. Trace mineral mixes are formulated to meet the needs of cattle, including the need for salt. The keys to using a free-choice product are to ensure cattle have access to mineral 100% of the time, use a palatable product and make sure they are consuming it at the expected level. Remember a 50 pound bag of hi-mag mineral to be fed at 3 ounces per head per day will only last 5 days in a 50 cow herd. If the cows have calves that eat mineral too, a bag may only last 3 days.

## Does Grass Tetany Only Occur in the Spring?

“Winter tetany” in beef cattle is caused by a diet low in energy and an insufficient intake of magnesium. It may also be observed when feeding wheat or rye silage during the winter



Hypomagnesemia is often referred to as an “iceberg” disease because only a few clinical cases occur but there are many unobserved or subclinical cases that may become problems after a stressful event such as a weather change.

since these are often high in potassium and nitrogen but low in magnesium. Affected cattle are borderline low in blood magnesium concentration then clinical signs of grass tetany are triggered by a stressor such as a severe cold snap.

### How Can Grass Tetany Be Prevented?

Prevention is based on providing soluble magnesium in the rumen during times when conditions are right



for grass tetany. As long as the active transport pump for magnesium is working well and driving magnesium across the rumen wall, problems should not develop. However, when factors prevent this pump from working (such as high potassium level in lush spring grass), the second or “backup” pathway is to increase the amount of magnesium in the diet with a high magnesium mineral mix. A high rumen magnesium level will allow magnesium to passively flow into the bloodstream of the cow without the need for the active transport pump. Supplementation with high magnesium mineral should begin at least 30 days prior to calving. Cows require 20 grams of magnesium daily or 4 ounces per day of a 15% magnesium mineral mix during the late winter and early spring. Mineral feeders should not be allowed to be empty because consistent intake is important for clinical disease prevention. UK Beef IRM mineral recommendations for free choice supplements for grazing beef cattle include 15% salt and 14% magnesium in the complete mineral mix and all magnesium from magnesium oxide (no dolomitic limestone or magnesium mica). These complete mineral mixtures supply the necessary sodium in the form of salt to aid in combatting high potassium intakes. Consumption should be monitored because they seldom eat enough trace mineral if

using poor quality products. Feeding ionophores (monensin, lasalocid) has been shown to improve magnesium absorption efficiency. High magnesium mineral may be discontinued in late spring once the grass is more mature, the water content of the forage is decreased, and daily temperatures reach at or above 60°F.

In addition to supplying supplemental magnesium, several management factors should decrease the risk of grass tetany. These include: 1) Soil test and apply fertilizer based on soil test results and use no more potassium than recommended since grasses are luxury consumers of potassium; 2) Legumes are high in magnesium and will help offset the problem although their growth is often limited in late winter; 3) Feed small amounts of hay and/or grain to cattle on lush pasture during susceptible periods or limit grazing to 2-3 hours per day; 4) Graze the less susceptible or non-lactating animals (heifers, dry cows, stocker cattle) on the higher risk

pastures.

In summary, increasing magnesium intake by supplementing with magnesium oxide, offering adequate salt to prevent sodium deficiency, and increasing total energy intake with

### Grass Tetany

- Hypomagnesemia; “Grass staggers”
- Symptoms:
  - Sensitivity to touch, trembling of facial muscles
  - Stiff movements, tetanic spasms of all limbs
- Cause:
  - Low blood Mg and high K
    - Spring grass = low Mg and high K
    - Mineral imbalance
    - High K inhibits Mg absorption
- Prevention:
  - Supplement ewes on pasture with Mg

good quality forage or supplemental feed are all effective tools in preventing grass tetany. These are exceptionally important when moving from winter rations to young spring grass pasture, especially in heavily milking cows. Grass tetany is considered a true veterinary emergency requiring prompt treatment with magnesium to prevent death.

## Belyew's Red Poll Cattle

*Big Sandy, TN.*

731-693-9706-731-693-9746



*Herd Sire:*

*Glen's Powerhouse Lancelot*

*Jr. Herd Sire:*

*D3 Cherokee Jack*

# International Red Poll Congress 2017

## UPDATES; WORLD RED POLL CONGRESS 2017

I would like to encourage all Red Poll members to contact the hosts in your respective area and offer to help welcome the Tour participants. Your ARPA is sponsoring the seminar and meal at Purdue University. We would like to see a large crowd there to show our support of the Red Poll Breed.

Please inform me if you are coming so we have enough food. Also, the Purina Research Farm near St. Louis is sponsoring seminars and meals. Again, please be sure to notify me if you are coming so we are assured to have enough food for everyone.

The World Tour concludes with the Junior Preview Show! What a great way to meet our foreign Red Poll friends as well as support our juniors! ALL are invited to the Dinner at Stonebrook at 7:00 pm. The meal is free, however, we need reservations in order to plan for food!

### Contact Information

Dan Schmiesing at [mardanacres@gmail.com](mailto:mardanacres@gmail.com)  
5220 Philothea Road, St Henry Ohio 45883  
or call 419-925-4883

## TENTATIVE SCHEDULE

1-Jun-2017	Arrival, Dayton, Ohio: Welcome 5:00pm
2-June	Jackson Farms, Spegal's Red Polls, Hoosier Park
3-June	Shuter Sunset Farms
4-June	Carl's Red Poll, Shipshewana
5-June	Shipshewana, Dinner/Theater
6-June	Shipshewana/Parks Red Polls West Lafayette, Indiana
7-June	Conference Purdue University
8-June	McMarshall Farms/Peoria Illinois
9-June	Caterpillar Tour
10-June	Hannibal, Missouri-Kansas City
11-June	Womelsdorf Red Poll Cattle
12-June	Wiese Farms, Independence, Missouri
13-June	St. Louis
14-June	Budweiser/Clydesdale, Purina Research Farm
15-June	Young's Red Poll
16-June	Reed's Red Polls/Nashville
17-June	Belyew's Red Poll/Nashville
18-June	Ashville, North Carolina
19-June	Biltmore Estate WinMock-Winston Salem, North Carolina
20-June	Carson Red Polls
21-June	Wilkshire
22-June	Tamarac, West Virginia Gallipolis, Ohio
23-June	Dorrance Red Polls-Formal Closing Versailles, Ohio
24-June	Mardan Acres/Stonebrook Farm-Cookout
25-June	Jr. Preview Show-Miami County Fair Grounds Dayton Airport and home



# MARDAN

Dan & Mary Jo Schmiesing  
5220 Philothea Rd. St. Henry, Ohio 45883  
PH # 419-925-4883 E-MAIL: [mardanacres@gmail.com](mailto:mardanacres@gmail.com)

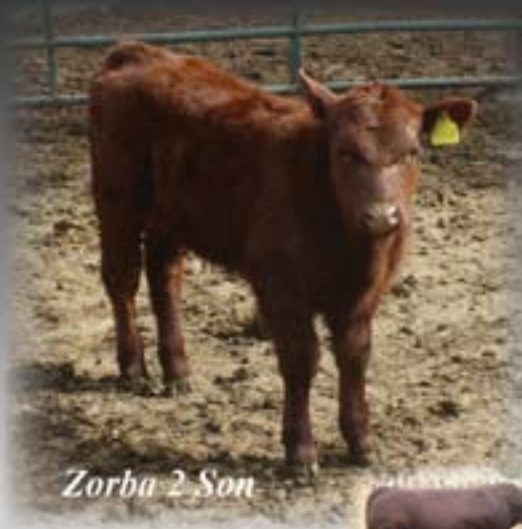
## "Quality bulls produce

## Quality cattle"

### CHECK OUT OUR NATIONAL SALE ENTRIES

Hill Top E Toy (Reg#214430)  
with a Zorba 2 son on her side.

Also entering  
Mardan's K 6162 (Reg#215372)



Zorba 2 Son



Zorba 2



Hill Top E Toy with Zorba 2 Son



# The Junior American Red Poll News Stop



## 2017 Junior Preview Show to be Held in Troy Ohio

The American Junior Red Poll Association is having their annual National Junior Preview Show in Troy, OH on June 25, 2017 at the Miami County Fairgrounds. The theme of the weekend is **"SHOW ME YOUR RED."** The Junior Preview Committee is planning a weekend full of fun activities for the kids. The members will be arriving Friday, June 23rd with their cattle. On Saturday, there will be a Costume Contest where the kids and their animal will be dressing up in whatever characters they wish. There will also be doing a Bovine Obstacle Course where the kids will lead their partners through an obstacle course designed specifically for cattle. For members who do not want to bring their livestock, there will be a photo contest with different categories that involve Red Poll Cattle. The winner of this contest will be honored by having their photo published in our National magazine. The weekend will be

rounded out on Sunday morning where the kids will be showing off their cattle before a judge.

We are also honored to be hosting the 15th International Red Poll Congress & Tour. People from all over the world will be descending on Dayton, OH to kick off this special event on June 1st. They will be traveling around the United States during the month of June visiting places such as Purdue University, Caterpillar, Purina Research Farm and the famous Budweiser Clydesdales.

The World Tour concludes with the Junior Preview Show! What a great way to meet our foreign Red Poll friends as well as support our juniors!

ALL are invited to the Dinner at Stonebrook at 7:00 pm. The meal is free, however, we need reservations in order to plan for food!

## Hotel Information

Troy Ohio has several hotels available during the Junior Preview Show. Most of the hotels are less than 10 minutes from the grounds and reasonably priced.

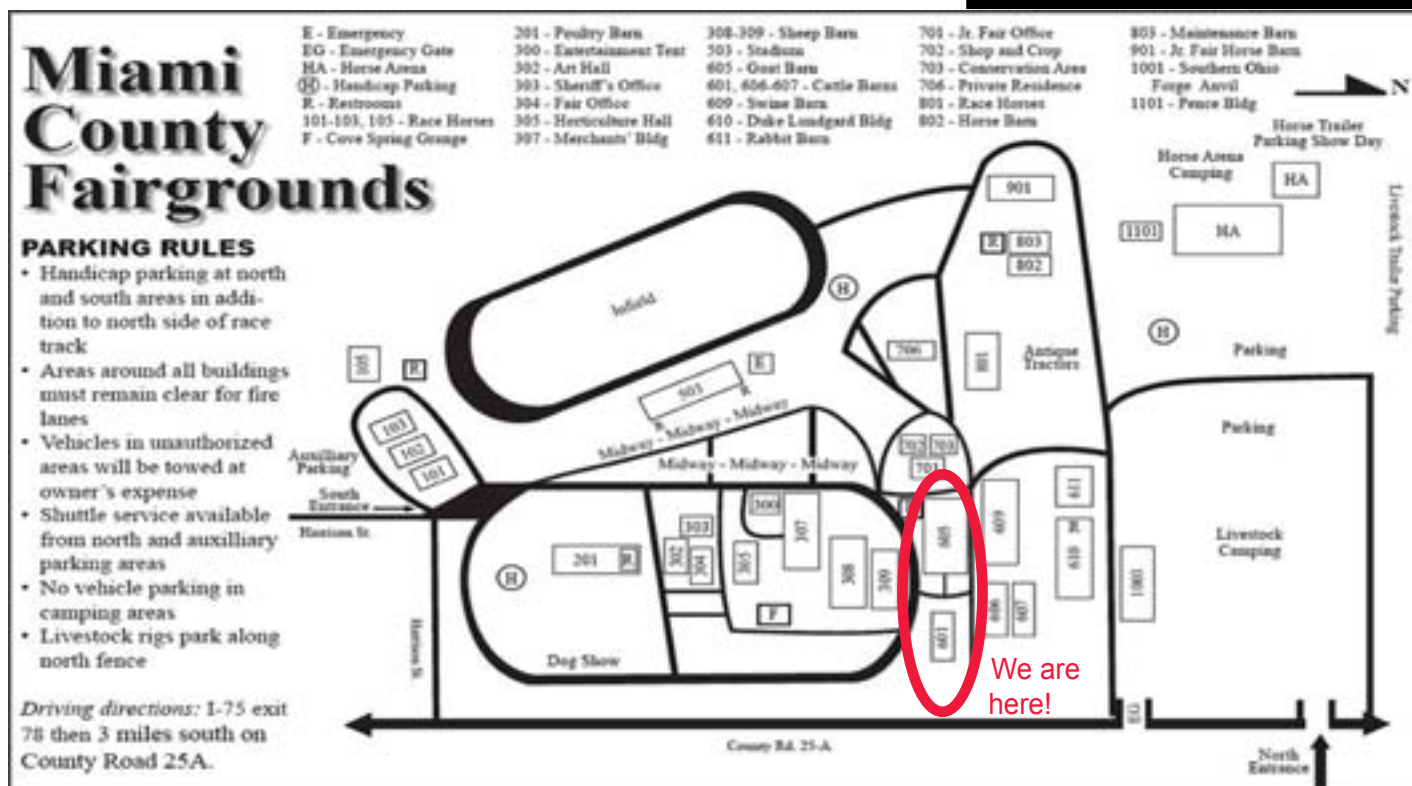
### Hotels in Troy

Comfort Suites • 937-339-2525  
**Junior Show Headquarters**

Fairfield Inn • 937-332-1446  
Holiday Inn Express • 937-332-1700  
Residence Inn • 937-440-9303  
Hampton Inn • 937-339-7801

***There is no block of rooms for the Junior Show. Camping is available!***

**ENTRY DEADLINE  
JUNE 1**





# The Junior American Red Poll News Stop



## Sponsorship Opportunities

You can be a part of this memorable event by being a sponsor at the Junior Preview Show. Your sponsorship will be recognized Sunday morning during the show. The Junior Show will be providing our junior members with meals throughout the weekend and special prizes for the various contests.

If you would like to be a part of this event, please send a check made out to the American Junior Red Poll Association to Becky Ebersole, 512 Peters Ave, Troy, OH 45373. The Show will be announcing the sponsors at various times over the weekend. Your donation is tax deductible and the show will be sending you an acknowledgement letter for your records. You are also more than welcome to come to the fairgrounds at any time over weekend and visit with the kids or any of our foreign visitors.

If you have any questions, please call Becky at 937-416-3011 or email at [gobucksrle@yahoo.com](mailto:gobucksrle@yahoo.com).

## Juniors to Sell T-Shirts and Polo Shirts As Fundraiser



The American Junior Red Poll Association is selling T-Shirts and Polo Shirts as a fundraising project. All junior members attending the Junior Preview Show will receive a free T-Shirt if ordered by June 1.

The shirts are available in Burgundy with Grey lettering or Grey with Burgundy lettering. The shirt as pictured here will also have the Tour listing on the back. The Polo shirt will have the logo pocket patch but no tour listing on the back.

The order form for the shirts will arrive in Junior Packets, but are also available online at [www.americanredpolls.com](http://www.americanredpolls.com).



***Juniors: Tap Into Your Creative Side  
Enter the Photo Contest!!  
4 Categories to Choose From  
Entries Due by 11:00 am Saturday, June 24***



ARPA is looking for a junior member, age 16-21, to serve as the National Ambassador. We did not have an applicant at the National Meeting last September. We want to fill the vacancy at the junior show. This is now open to young men and women who are eligible junior members.

Be sure to go to the website and complete the application!

## Diamond Excel Award Program

The American Junior Red Poll Association has developed an award program designed to recognize outstanding individuals and their animals based on Junior show placements throughout the exhibition season. This award will be given to the purebred heifer that earns the most points from placing in approved Junior shows.

These shows can be the Junior Preview Show, the National Junior Show at NAILE, State 4-H, and State FFA shows. A Nomination form must be completed and turned in by June 1 to be eligible for the award along with a \$5 per individual animal nomination fee.

All heifers must carry registration papers with the American Red Poll Association. The animal must also be registered and exhibited in the Junior Member's name.

The exhibitor will then submit their Exhibitor Tally Sheet by November 1. The award will be presented at the North American International Livestock Exhibition (NAILE) in November immediately following the show.

Nomination forms will be arriving in the Junior Packets, but you may also download the form from the website at [www.americanredpolls.com](http://www.americanredpolls.com).



# The Junior American Red Poll News Stop



## 2017 NATIONAL JUNIOR PREVIEW SHOW CLASSES

### Class 1 - Purebred Heifer

Born on or After September 1, 2015

### Class 2 - Purebred Steer

Born on or After January 1, 2016

### Class 3 - Cow/Calf

Calf born 1/1/17 to 5/1/17

### Class 4 - Bull Calf

Born on or after September 1, 2016

### Class 5 - Pair of Females

Owned by the Same Exhibitor

### Class 6 - Get of Sire

3 Head

(May be owned by more than 1 Exhibitor)

### Class 7 - Showmanship

Divided by Age of Exhibitor

Seniors (16-21)

Juniors (12-15)

Beginner (9-11)

Pee Wee (8 and under)

## SHOW ME YOUR RED Schedule

### Friday, June 23

Noon

Cattle may begin arriving at the Miami County Fairgrounds, Troy, OH

6:00 p.m.

Cookout at the fairgrounds for Junior Members, family, & friends

### Saturday, June 24

9:00 a.m.

Cattle must be on the fairgrounds

9:45 a.m.

Heifer Check-In/Steer Weighed

11:00 a.m.

Junior Meeting and Officer Election

\*Turn in pictures for Photo Contest

Noon

Pizza Party for Junior Members

\*Note—There will be a Food Truck available on the grounds.

1:30 p.m.

Costume Contest

3:00 p.m.

Bovine Obstacle Contest

7:00 p.m.

Dinner at Stonebrook Farms

\*All junior members, families and friends are invited

\*National Ambassador to be announced.

### Sunday, June 25

8:30 a.m.

Pre-show Festivities

9:00 a.m.

\*Photo winners will be announced

JUNIOR PREVIEW SHOW

Show order: Steers—Bulls—Heifers

10:30 a.m.

Showmanship

**Note: Any junior may show a calf in showmanship.**

**If you do not have a calf, our Red Poll breeders will find a calf so that you can participate.**

## ENTRY DEADLINE - JUNE 1

Entries must be postmarked by Thursday, May 25 due to Memorial Day to arrive by June 1, 2017. Entries must be accompanied by an entry fee of \$20 per head.

## CAMPING IS AVAILABLE

\$30 per night

Electricity Available

No water hook up-water is available

Dump Station will be open

### Saturday, June 24

**ALL are Invited  
to a Free Cookout Dinner  
at Stonebrook Farms  
7:00 p.m.**

*Please notify Dan Schmiesing by June 15  
of number of guests attending  
in order to help plan for food.*



# PSYCHOLOGY of LIVESTOCK FAMILIES

6 REASONS LIVESTOCK  
PROJECTS ARE  
PROVEN TO RAISE  
GREAT KIDS



Original article posted on [www.surechamp.com/blog](http://www.surechamp.com/blog) by Staff

There's got to be a scientific reason as to why livestock kids are such incredible kids. As a whole, they possess such admirable traits at such a young age — polite, compassionate, confident, hard working, and driven. As livestock-minded people, we might immediately attribute this to genetics, and while that may be true to a degree, child psychology shows that it is the parental involvement and the environment in which livestock families raise their children. Here are six reasons psychologists believe the #stockshowlife benefits child development.

## **EFFECTS OF STRONG PARENTAL INVOLVEMENT**

### **1. Emotional Health**

Compared with peers whose parents are often absent throughout the day, teens whose parents are present when they go to bed, wake up, and come home from school are less likely to experience emotional distress.<sup>1</sup> Because stock have to be fed morning and night, and raising livestock is not a one-man project due to its labor intensive nature. Livestock families, more often than not, wake together, work together when the kids come home from school and are together prior to going to bed.

### **2. Self-Esteem**

Youth whose parents exhibit love, responsiveness, and involvement tend to have higher levels of self-esteem and internal self-control. Parental love, responsiveness, involvement and non-coercive, democratic discipline had a strong association with

adolescent psychosocial development as measured in global self-esteem, feelings of internal control and ability, and susceptibility to negative peer pressure.<sup>2</sup> The support and love needed to successfully engage in livestock projects are huge. So much of the time parents and children learn together and work together in hopes to achieve goals. This builds dependency and trust between one another and confidence in one's self.

### **3. Educational Attainment and Academic Achievement.**

Students whose parents are more involved with their schooling tend to complete higher levels of education and are more likely to graduate from high school than peers whose parents are not so involved. On average, youths whose parents engage in leisure and educational activities with them achieve better grades than peers whose parents spend less time with them. Students whose teachers reported higher levels of parental involvement were more likely to graduate high school than peers whose parents were not so involved.<sup>3</sup> Pre-teens whose parents engaged in activities in the home and outdoors, spent leisure time away from the home with them, shared meals with them, helped with homework or reading, and engaged in other home activities with them earned better grades in school, on average, than peers whose parents spent less time with them.<sup>8</sup> Parents of livestock kids have made a decision to embark on activity they know must be tended to multiple times per day rather than during school or a couple of days per week after school. They have a great deal of time, money and sweat invested

in their projects and the idea of not being able to participate at a show due to poor grades encourages both student and parental expectation.

### **4. Behavior.**

On average, adolescents whose parents are more involved in their lives and discuss important decisions with them exhibit lower levels of aggression and antisocial behavior than peers who experience less parental involvement. The greater the parents' involvement, the lower the level of adolescents' behavioral problems, both in terms of aggression and antisocial behavior and negative feelings such as anxiety, depression, and low self-esteem.<sup>4</sup> When engaging in livestock projects, decisions must be made each day as to how to react and adapt to ever-changing scenarios. These decisions often must be made from relying on and soliciting advice from others. In return, children learn how to interact with peers and adults and create solutions to challenges each and every day.

### **5. Delinquency (Boys).**

Adolescents who experience supportive and affectionate relationships with their fathers are less likely to engage in delinquent behavior than peers who do not experience such a relationship. Paternal supervision, as well as supportive and affectionate father-son relationships, discourage juvenile delinquency, regardless of a youth's delinquent friends, perception of trouble in the neighborhood, and/or positive attitudes about breaking the law.<sup>5</sup> We love our stock show dads and positive male role models who adorn this industry. The pride that radiates

through the agricultural industry when someone of the next generation carries the torch is unexplainable. To encourage young people to do so when there are so many alternatives and options in today's society takes encouragement and support.

## **6. Tobacco Use and Substance Abuse.**

On average, adolescents who are strongly connected to their parents and other family members are less likely to smoke cigarettes, drink alcohol, or use marijuana. Youth surveyed (grades 7-12) were less likely to smoke cigarettes if they had high levels of connectedness to parents and other family members. Those in grades 9-12 were also less likely to smoke, drink alcohol or use marijuana if their parents were present in the home more often, if they engaged more often in activities with their parents, and if they perceived that their parents had high expectations for their educational attainment.<sup>6/7</sup> The amount of time required to effectively

raise livestock projects is significant in relation to most extracurricular activities. Due to this and simply the amount of time spent under supervision of adults, youth do not have time to come up with negative activities to occupy their time.

In addition to parental involvement, the environment in which livestock kids are raised greatly contributes to their success as young members of society: constant exposure to outdoor activities, experiencing different cultures and lifestyles through travel, having to care for animals who depend on them for health and wellbeing, the understanding of nutritional needs, financial considerations, etc. All of these would not be possible, however, without parents who have created this environment for their children.

Thank you stock show moms, dads, teachers and mentors who create this environment, who put in the time and who choose to guide our next generation to greatness!

Original article <http://www.familyfacts.org/briefs/40/parental-involvement-and-childrens-well-being>

1. Michael D. Resnick et al., "Protecting Adolescents from Harm: Findings from the National Longitudinal Study on Adolescent Health," *Journal of the American Medical Association* 278, No. 10 (1997): 823-832.
2. Marjory R. Gray and Laurence Steinberg, "Unpacking Authoritative Parenting: Reassessing a Multidimensional Construct," *Journal of Marriage and Family* 61, No. 3 (August 1999): 574-587.
3. Wendy Miedel Barnard, "Parent Involvement in Elementary School and Educational Attainment," *Children and Youth Services Review* 26 (2004): 39-62.
4. Marcia J. Carlson, "Family Structure, Father Involvement, and Adolescent Behavioral Outcomes," *Journal of Marriage and Family* 68, No. 1 (February 2006): 137-154.
5. Gary F. Jensen, "Parents, Peers, and Delinquent Action: A Test of the Differential Association Perspective," *American Journal of Sociology* 78, No. 3 (1972): 562-575.
6. Michael D. Resnick et al., "Protecting Adolescents from Harm: Findings from the National Longitudinal Study on Adolescent Health," *Journal of the American Medical Association* 278, No. 10 (1997): 823-832.
7. Jacinta Bronte-Tinkew and Kristin A. Moore, "The Father-Child Relationship, Parenting Styles, and Adolescent Risk Behaviors in Intact Families," *Journal of Family Issues* 27, No. 6 (June 2006): 850-881.
8. Elizabeth C. Cooksey and Michelle M. Fondell, "Spending Time with His Kids: Effects of Family Structure on Fathers' and Children's Lives," *Journal of Marr*

# **Blue Ridge Red Poll Association**

**President - Lee Hartsell • Vice President - Jeff Wilkins**

**Secretary/Treasurer - Mrs. Barbara Morrison**

**Directors: J.L. Morrison, Jo-Ellen Greene, Clarence Durham**

Lin & Angie Andrew  
343 Moon Lindley Rd.  
Snow Camp, NC 27349  
(919) 663-2937 (336) 269-0207  
[linchpfarm@yahoo.com](mailto:linchpfarm@yahoo.com)

Harold Brammer Arts  
2045 Ridgedell Dr,  
Elon, NC 272-44  
(336) 584-7027

Mike & Patrice Buck  
219 Bethany Schoolhouse Road  
Saluda, SC 29138  
(864) 445-7399

Bob Carson  
211 Nixon Road  
Statesville, NC 28625  
(704) 657-5126  
[bcarson@carsonfarmsredpollcattle.com](mailto:bcarson@carsonfarmsredpollcattle.com)  
[www.carsonfarmsredpollcattle.com](http://www.carsonfarmsredpollcattle.com)

Clarence Durham  
470 Andrew Store Rd.  
Pittsboro, NC 27312  
(919) 933-2969

Michael & Jo-Ellen Greene USN (Ret)  
PO Box 165  
Thompson, PA 18465  
(570) 727-2321

David & Cynthia Hannah  
411 Medford Hannah Road  
Waynesville, NC 28785  
(828) 734-6968

Lee Harstell  
4967 Flowes Store Road  
Concord, NC 28025  
(704) 791-0743  
[lhartsell@hmsracing.com](mailto:lhartsell@hmsracing.com)

Charles Hursey  
2443 Barber Road  
Elon, NC 27244  
(336) 284-3210

Randall M. Legg  
P.O. Box 264  
Mt. Lookout, WV 26678  
(304) 872-4506  
[R\\_mLegg@hotmail.com](mailto:R_mLegg@hotmail.com)

Helen Legg  
P.O. Box 8, Shaffer Road  
Mt. Lookout, WV 26678  
(304) 872-1475

**E-mail: [apolloomfarm@embarqmail.com](mailto:apolloomfarm@embarqmail.com)  
3230 Woolwine Hwy., Stuart, VA 24171 • (276) 694-4297**

William "Bunny" & Elizabeth McClure  
2517 Cat Creek Rd.  
Franklin, NC 28734  
(828) 524-3608  
[e3251wemc@frontier.com](mailto:e3251wemc@frontier.com)

Barbara Morrison  
3230 Woolwine Hwy.  
Stuart, VA 24171  
(276) 694-4297

J.L. Morrison  
3193 Woolwine Hwy.  
Stuart, VA 24171  
(276) 694-0101

Jim & Deb Naylor  
1674 Evans Mill Rd.  
Dillwyn, VA 23936  
(434) 983-5383

Otis & Dot Saunders  
6672 Kerr Chapel Rd.  
Elon, NC 27244  
(336) 421-3535

Galen & Katherine Smith  
520 Beulah Church Rd.  
Kingsport, TN 37663  
(423) 279-0320  
[MajorGalen@aol.com](mailto:MajorGalen@aol.com)

Leo & Alice Tolia  
Rose Hill Farm  
1709 Dillons Mill Rd.  
Boones Mill VA 24085  
(540) 334-7052  
[ltolia@sitestar.net](mailto:ltolia@sitestar.net)

Robert Vincent  
1930 Shutterlee Mill Rd.  
Staunton, VA 24401  
(540) 886-3339

Wilshire Jeff D. & Katherine Wilkins  
2100 Wilkins Rd.  
Burlington, NC 27217  
(336) 538-0888 or (336)584-3738w  
[jdw.wilshire@gmail.com](mailto:jdw.wilshire@gmail.com)

Col. Jeff and Janice Wyatt  
P.O. Box 42  
Blenheim, SC 29516  
(803) 651-3086  
[rogerscreekfarm@gmail.com](mailto:rogerscreekfarm@gmail.com)

# *News from the Board*

The Board and the Committees have been very business the last few months.

This year, each committee has become very active with their respective responsibilities. The committees have been charged with working on their respective area and bringing any needed recommendations for improvements and changes to the rest of the board.

The Board has been meeting monthly and each Committee is to submit a report each month to the board of their progress.

The Rules and Bylaws have been active with cyber meetings to review the Rules and Bylaws.

The Publications Committee has

been active working to bring new and educational articles to the Journal as well as working on a new brochure for ARPA.

The National Banquet and Seminars Committee has been working to bring new speakers to the National Meeting in September as well as planning the banquet.

The National Sale Committee has been working on sponsorships, advertising, and getting the details set for the National Sale in September.

The Junior Committee has been hard at work bringing the Junior Preview Show to the membership in June.

The Corporate Sponsorship Committee has been working to try to get sponsors for the sale as well as getting new

advertisers for the Journal to help offset costs.

The National Show Committee worked diligently to refine the NAILE rules and have them ready to go for the premium book.

The Finance Committee has reviewed the financials each and every month to bring any new reports to the board as needed.

Board Minutes are published on the website along with the supporting documents voted on. If a member is unable to view the website, they may call the office and request hard copies of the Board Minutes.

To visit the webpage, go to [americanredpolls.com](http://americanredpolls.com). The Board Minutes are listed under About ARPA.

## Banquet Plans Underway

The National Banquet and Seminars Committee is putting the final touches on the Banquet for the 73rd Annual National Red Poll Meeting. The banquet will be held on Friday, September 29 with the meal starting at 7:00 pm.

This year, the committee opted to hold the banquet at the hotel, Springhill Suites, for the convenience of the membership. The banquet will be in the Chestnut Room and catered by

"The Keg" from right there in Murray Kentucky.

In addition, a silent auction is planned as well as several presentations. The Committee along with the Executive Committee will be presenting several awards that you, the membership, will have the ability to nominate.

Those awards include bringing back the Promoter of the Year Award. Also, there will be nominations available for Lifetime Achievement Award, Longevity Award, and some that are still in the works!

This year, banquet reservations must be paid at the time of their making. A reservation form will be coming in a packet to the membership in late May, early June. You may send your reservations and checks to the office or you may pay via credit card.

We look forward to seeing all of you at the banquet in September!

### Banquet Reservations And Payments

**Due September 15th**  
In the ARPA Office

No refunds issued for  
cancellations after September 20

### ARPA NATIONAL HEADQUARTERS HOTEL

SPRINGHILL SUITES®  
MARRIOTT

**1512 N 12th St**  
**Murray, KY 42071**  
**(270) 917-8000**

**MAKE YOUR RESERVATION BY**  
**SEPTEMBER 1**

**BLOCK UNDER**  
**AMERICAN RED POLL**  
**ASSOCIATION**

# 73rd National American Red Poll Sale



The American Red Poll Association will hold the 73rd National Sale September 30th, 2017, 9:30 am at the William Cherry Expo Center at Murray State University in Murry Kentucky. The Hutson School of Agriculture is co-sponsoring the event.

In response to the questionnaires received from last year's attendants, the Committee decided to have the event again centrally located so it would be less than one day drive for most attendees. Everyone (members and interested parties) is encouraged to attend.

The Murray State University - Hutson School of Agriculture is very

excited to co-sponsor this event with ARPA at the William Cherry Expo Center. It is a fantastic facility that can be set up with a sale ring and pens that will handle unaltered cattle as well as haltered cattle with a head gate provided if needed.

As a special note the deadline for sale entries and payment of \$50.00 per lot is required by July 15th due to the office. This enables ARPA to have the Journal/Catalog published and allows ample time for prospective buyers to study the entries. A veterinarian will be on hand at sale time to write health papers for the buyers. A sale commission will be 10% up to the maximum of 15% depending on number of entries and sale expenses as voted on by the Board of Directors.

A valuable quote from an old timer in our organization years ago said "to bring your quality cattle to the National Sale because it sets the price for the coming year". Those words still are true today.

***Interested in Being a Sponsor at the National Sale & Meeting?  
Sponsors will receive additional advertismment in the  
RPBJ as well as at the meeting and sale!  
Contact the office for more information!***

## Health Requirements For Sale Animals

- Provide 1 Health Paper Per Lot for the Veterinarian
- A Kentucky Permit Number must be obtained by your vet & **Written on the Health Paper** or **the animals will not be able to unload!** This is a Kentucky State requirement!!
- Make sure your animal is health inspected and ready to sell into any state
- Make sure your vet has the name and address of the facility on the health papers

### Facility Address

William Cherry Expo Center  
Murray State University  
2101 Campus Farm Road  
Murray, KY 42071

## Tentative Event Schedule

### Thursday, September 28

Noon to 6PM Arrival of cattle.  
Registrations and Health Papers to be checked in by Brian Fairchild.  
6 PM Consignors' meeting.  
7 PM National Board of Directors meeting.

### Friday, September 29

8:00 AM Check In Table Open  
9:30 AM 73rd National Red Poll Membership Meeting  
12 PM Lunch - FREE with a Reservation.  
1 PM Dr. Backes of Purina Research  
4 PM Viewing of Sale cattle  
7-10 PM Banquet at the Springhill Suites Marriott  
\$20.00 per person  
Paid Reservations Due by September 15

### Saturday, September 30

9:30 AM American Red Poll National Sale



## FARM & RANCH BOOTHS

The National Banquet & Seminars Committee is once again asking for ARPA members to set up a farm or ranch booth in the arena area at Murray State University.

These booths will be set up in a little different space this year which will be better for the members. The more participants the better! You do not have to have cattle consigned to put up a booth!

To reserve or for more information, contact Kaye Gilbert at [americanredpolls@gmail.com](mailto:americanredpolls@gmail.com) or JL Morrison at [design3@consultant.com](mailto:design3@consultant.com)

## Texas Association Enjoyed Meeting at Shaffer Ranch

by Sally Shaffer

The members of the Texas Red Poll Association met at the farm home of George and Sally Shaffer on April 8 for a noon dinner.

Thirty members and guests enjoyed a Red Poll beef brisket and rump roast dinner with many sides and desserts provided by those attending.

Texas was again honored to have four generations of the Baxter family attending: Carolyn Baxter, Ellen Baxter

Brown, Rachel Garcia, Rebeca Garcia, Jennifer Standfield, Carol Garcia, and five children. It was thrilling to have children at the gathering.

Also attending were Greg Fairchild, Brian Fairchild, Phil Wyrick, Arthur and Louise Carpenter, Fred, Candy, and Jacob Ernest, Darrell and Sherry Thomas, Don and Barbara Hill. We were very happy to have such a good attendance.

After dinner, a meeting was called to order by President Darrell Thomas. The minutes of the last meeting were read and approved. Copies of the treasurer's report were read and accepted.

A discussion was held about the advertising results and it was decided that two of the periodicals ads would be dropped. Another magazine will be considered. Members paid dues and up

dated their contact information.

It was announced that the National Annual Meeting will be held at Murray State University, the same place it was last year. Date will be published in the Red Poll Beef Journal.

Everyone received a gift and door prize. The meeting was then adjourned to visit the Shaffer herd at the pasture. It was a great day for Red Poll breeders.



## ATTENTION AFFILIATE ASSOCIATIONS

Be sure to send in your meeting news and activities to have it published on the Affilitate Association News Page.

We would like our breeders from across the country and across the North American Continent to hear what other groups are doing!!

# TEXAS

## RED POLL ASSOCIATION

### OFFICERS

President  
Vice President  
Secretary-Treasurer

Darrell Thomas  
Caleb Cunningham  
Sally Shaffer

### DIRECTORS

#### Directors

Lois Carpenter • Sherry Thomas • Fred Ernest • Jacob Ernest

### MEMBERS

Sam & Peggy Anderson  
(903) 396-7572 Kerens, TX

Greg Fairchild  
12516 Alexander Road  
Alexander, AR 72002  
(972) 207-5999

Carolyn Baxter  
(903) 396-2678 Kerens, TX

George & Sally Shaffer  
157 CR 1266  
Pittsburg, TX 75686  
(970) 846-6343  
shafgands@gmail.com

Arthur & Louise Carpenter  
8650 E. Hwy 79  
Milano, TX 76556-6105  
(512) 455-6105

Darrell & Sherry Thomas  
20041 FM 2755  
Royse City, TX 75189  
(972) 965-7707 cell  
roysecitymasons@yahoo.com

Caleb Cunningham  
849 C Bar C Road  
Booneville, AR 72927  
redhillstockfarm@gmail.com

Phil Wyrick  
1101 Alexander Road  
Mabelvale, AR 72103  
(501) 517-2534 cell  
www.esquirelandandcattle.com

Fred L., Candy, Jacob Ernest  
(281) 728-7822  
501 ACR 4452  
Palestine, TX 75803  
fiernest@gmail.com

Brian Fairchild  
4394 Berkley Drive  
Everton, AR 72633  
(870) 754-9377

### JUNIOR MEMBERS

Mary Brown – Red Poll Queen  
8648 E Hwy 79  
Milano, TX 76556

## AFFILIATES IN YOUR AREA

### Blue Ridge Association

President Lee Hartsell  
704-791-0743  
Secretary Barbara Morrison  
276-694-4297

### Indiana Association

President Gail Spegal  
317-835-7617  
Secretary Gordon Jackson  
765-468-7779

### Kentucky Association

President Jeff Doll  
859-743-7923  
Secretary Leo Young  
502-321-9893

### Michigan Association

President David Hickman  
989-345-5755  
Secretary Claudia Libbey  
231-536-9773

### Southern States Association

President Mike Reed  
270-834-9579  
Secretary Sandra Sanker  
615-347-3573

### Texas Association

President Darrell Thomas  
972-965-7707  
Secretary Sally Shaffer  
970-846-6343

### Western States

President James Campbell  
417-638-5000  
Secretary Mike Mammele  
320-752-4467

**Be sure to contact the Affiliate  
in your area regarding meeting dates  
and times if you are intersted in joining.**

## New Affiliate Forms in the South

*by Regan Logan & Sandra Sanker*

Red Poll enthusiasts from Kentucky and Tennessee met January 22, 2017 to organize the Southern States Red Poll Association in Dickson, Tennessee. The purpose of the Association is to promote the Red Poll breed in our region and to enjoy fellowship with cattlemen and cattle women.

Faron Daniel led the meeting advising the first order of business was a President, officers, and a complete board. Four members were elected as officers. Mike Reed is serving as president, Faron Daniel as vice president, Sandra Sanker as secretary and Derrek Dew as treasurer. In addition, three board members were elected to assist and advise the officers. Current board

members are Brent Smith, Brant Sanders and Josh Sanker. Fourteen Red Poll breeders attend.

The next meeting was held in Louisville, Kentucky at the Kentucky Farm Bureau Beef Expo. Twelve breeders attended the meeting.

The membership made the decision meetings will take place twice a year on the first Saturday in August and the first Saturday in February. The next meeting is noon, Saturday August 5 at Dale's Steak House in Dickson Tennessee and all are invited. Anyone interested in joining the Southern States Red Poll Association is welcome. For more information, contact Mike Reed at 270-834-9579.

## Southern States Red Poll Association

**President:** Mike Reed  
**Vice President:** Faron Daniel  
**Secretary:** Sandra Sanker  
**Treasurer:** Derrek Dew

### **Directors**

Brant Sanders • Josh Sanker • Brent Smith

Edsel & Jan Belyew  
3986 Sulphur Creek  
Road  
Big Sandy, TN 38221  
731-693-9706

Regan Logan  
12049 West Farm Road  
Only, TN 37140  
615-218-3556

Sandra Sanker  
7110 New Hope Road  
Fairview, TN 37062  
615-347-3573

Caleb Cunningham  
849 C Bar C Road  
Booneville, AR 72927

Mike Reed  
82066 Chaumont Road  
Park City, KY 42160  
270-834-9579

Brent Smith  
10475 Highway 424  
Yuma, TN 38390  
731-415-9477

Faron Daniel  
7480 Middle Butler  
Road  
Collinwood, TN 38450  
931-209-7620

Bob Sanders  
551 Michael Drive  
Waynesboro, TN 38485  
931-306-1365

Glen & Carolyn Sullivan  
675 Donegan Road  
Dickson, TN 37055  
615-446-7517

Derrek Dew  
1237 Denney Road  
Dickson, TN 37055  
615-351-0876

Brant Sanders  
PO Box 213  
Waynesboro, TN 38485  
931-332-2857

Freeman Law  
7110 New Hope Road  
Fairview, TN 37062  
615-202-5477

Josh Sanker  
244 Old Columbia Rd  
Dickson, TN 37055  
615-347-8621

# The Benefits of Grass Fed

by James Campbell, Grass Fed Initiative Committee Member

Good things come to people who wait and that is the jest of a grass based program. It takes time to raise grass beef but, it's time well spent and the payoff is worth its weight in gold.

Red Poll genetic traits are well suited for a grass based program. Let's look at a few of these traits and see why.

- **Docility** – easy handling makes moving them from pasture to pasture a snap and docile cattle are low-stress. Low stress contributes to tenderness
- **Feed efficient** – can make the most out of nothing, low overhead
- **Naturally flavorful** – lean beef without fat can still taste delicious, naturally
- **Genetically Tender** – lean beef without fat can still be tender, marbling (fat) accounts for only 10 percent of the variability in tenderness.

The Red Poll breed is without reproach as the grass fed choice in cattle. Now here are the benefits of doing a grass fed program.

## Nutritional Benefits

What one eats has a tremendous effect on one's body and health. There are a number of significant nutritional and food safety differences between the meats of grass-fed cattle compared to feedlot-raised animals. Below is a summary of the research presented at EatWild.com.

### Less Fat and Calories

Meat from grass-fed cattle, sheep, and bison is lower in total fat, and it can have 1/3 less fat than a similar cut from a grain-fed animal. Less fat means less calories and lower cholesterol.

### More Omega-3s - Heart-Healthy Fats

EFA or essential fatty acids such as omega-6 and omega-3 are both needed but in the proper ratio. Feeding grain to cattle nearly eliminates omega-3 while increasing omega-6s, which increases inflammation in the body. However, grass-fed beef is 2 to 4 times higher in omega-3s and lower in omega-6s, lessening inflammation in your body. Also, higher omega-3s lessen your risk of high blood pressure, irregular heartbeats, heart attacks, depression, ADD, Alzheimer's, cancer, etc. while helping

your brain to function optimally.

### More Conjugated Linoleic Acid (CLA) - Cancer-Fighting Fats

Meat and dairy products from grass-fed ruminants (cows, deer, bison, sheep, and goats) are the richest known sources of another type of healthy fat called conjugated linoleic acid (CLA). Their products contain from 3 to 5 times more CLA than products from animals fed conventional, grain-fed diets. Animal and human studies show that CLA is a potent defense against cancer.

Besides cancer-fighting properties, CLA, as many studies show, helps people lose weight, as well as control diabetes and high blood pressure.



### More Vitamin E

The meat from the grass-fed cattle is 4 times higher in vitamin E than meat from the feedlot cattle. The meat from the grass-fed cattle is almost 2 times as high as the meat from the feedlot cattle given vitamin E supplements. In humans, vitamin E is linked with a lower risk of heart disease and cancer. This potent antioxidant may also have anti-aging properties. Most Americans are deficient in vitamin E.

### Additional Healthy Benefits

There are other health benefits that research is uncovering. A study published in Nutrition Journal in 2010, conducted by California State University, looked at the fatty acid profiles and antioxidant content of grass-fed and grain-fed meat. Grass-fed beef had elevated levels of carotenoid (a precursor to Vitamin A) and other health benefits.

### Score Ten for Grass-Fed Beef!

Grass-fed beef is better for human health than grain-fed beef in ten different ways, according to the most comprehensive analysis to date. The 2009 study was a joint effort between the USDA and researchers at Clemson University in South Carolina. Compared with grain-fed beef, grass-fed beef was:

1. Lower in total fat
2. Higher in beta-carotene
3. Higher in vitamin E (alpha-tocopherol)
4. Higher in the B-vitamins thiamin and riboflavin
5. Higher in the minerals calcium, magnesium, and potassium
6. Higher in total omega-3s
7. A healthier ratio of omega-6 to omega-3 fatty acids (1.65 vs 4.84)
8. Higher in CLA (cis-9 trans-11), a potential cancer fighter
9. Higher in vaccenic acid (which can be transformed into CLA)
10. Lower in the saturated fats linked with heart disease

### Milk from grassfed cows has hidden benefits<sup>2</sup>

Until recently, all of the experiments demonstrating the cancer-fighting properties of CLA (conjugated linoleic acid) have used synthetic CLA. To see whether the CLA that occurs naturally in cow's milk has similar cancer-fighting properties, researchers recently compared the two. They fed one group of rats butter that was high in CLA and fed another group of rats an equivalent amount of synthetic CLA. As one would expect, the natural CLA proved to be just as effective in blocking tumor growth as the man-made variety. (In both cases, cancer yield was reduced by about 50 percent.) However, the high CLA butter had an added benefit: the rats eating the butter accumulated even more CLA in their tissues than the rats fed an equivalent amount of synthetic CLA. The reason? Researchers believe that the rats were converting another "good" fat found in the butter, trans-vaccenic acid or TVA, into CLA, giving them a second helping of this cancer-fighting fat.

### Grass-fed Beef Clearly Superior, Says New German and Canadian Study<sup>3</sup>

Yet another study shows that grass-fed meat is nutritionally superior

to feedlot meat. This newest study examined the differences in fat content between four breeds of cattle that were either 1) raised on pasture or 2) given grain and other feedstuff in a feedlot.

As in previous research, the results showed that meat from cattle raised on pasture had much healthier fats. The researchers concluded that grass-fed meat is "clearly superior" and "remarkably beneficial." They stated that grass-fed meat "should be promoted as an important part of a healthy balanced diet."

#### **TLC increases meat tenderness**

Many people assume that the degree of marbling in meat is a major determinant of tenderness. Not so. Marbling accounts for only 10 percent of the variability in tenderness. There are numerous other factors involved, including the amount of stress animals are subjected to prior to slaughter.



22 month old steer: Born, raised, & finished on common Bermuda grass in summer with fescue hay in the winter

Researchers in New Zealand and Australia report that beef is consistently on the tender end of the scale when pre-slaughter stress is minimized, regardless of breed.

### **Animal Health**

Treating animals humanely, ethically, and using sustainable, organic farming practices ensures your animals are healthy.

#### **Low Animal Stress**

Grass fed beef live low stress lives out in the pasture, eating their natural diets of various grasses and other forage plants. Low-stressed animals are healthier animals.

#### **No Antibiotics, Steroids, or Growth Hormones**

Feedlot cattle spend their days in overcrowded, stressful confinement, standing in their own manure and eating

unnatural diets of grain that is hard to digest and makes them sick. Because of these conditions, antibiotics and other drugs are necessary. Additionally, to raise the cattle in these feedlots quickly, the animals are given growth hormones and steroids.

While grass-fed beef grows more slowly than grain-fed beef, cattle raised in this natural environment with a natural diet, are rarely in need of antibiotics or other drugs.

#### **Less Risk of Diseases for Animals & People**

Unlike grass-fed conditions, feedlot conditions are ripe with illness. Because feedlot animals are routinely given low-levels of antibiotics, some of which are the same ones used in human medicine, this overuse of medications is creating new bacteria-resistant strains. When humans become infected with these new, disease-resistant bacteria, there are fewer medications available to treat people. Some of our latest deadly diseases, like SARS, are a result of these factory farms because in crowded conditions, disease spreads quickly. Also, in large factory farms, disease is much more likely to jump from animals to humans.

If cattle are raised in low-stress, uncrowded, healthy environments, there is a significantly lower risk for diseases for animals and people, including E. coli

### **Environmental Benefits**

Cattle that are rotationally grazed on pasture, using organic practices, require more knowledge and skill than sending them to a feedlot. In fact, for grass-fed beef to be flavorful and tender, the cattle need to forage on many different types of high-quality grasses, clover, lespedeza, and other forage plants.

Grass-based livestock production is inherently sustainable as this production system relies on bio diversity and ecological complexity to maintain production without the use of costly inputs, such as herbicides, non-organic fertilizers, and pesticides. Providing this nutritious diversity requires healthy soil and careful pasture management so that the plants are maintained at an optimal stage of growth.

This type of farming benefits the environment in several ways:



#### **Significantly Reduces the Use of Fossil Fuel**

In a grass-based system, rotational grazing allows the animals to roam around the farm in a managed fashion, fertilizing the pastures, so you don't need commercial fertilizers to grow high-quality grasses. In contrast, corn, other grains, and soybeans grown not only for human consumption, but also for feedlot animals, require great amounts of fossil fuels for planting, tilling, fertilizing, and harvesting annually.

#### **Enhances Soil Composition**

As cattle graze, they work manure into the soil along with other decaying organic matter, enriching the land with nutrients and carbon. Also, healthy grass roots retain water and microbes, which help to keep the soil healthy.

#### **Protects the Waterways**

By not using commercial fertilizers, herbicides, and pesticides or confining animals in feedlot pens, that create huge amounts of manure, we are protecting the waterways from chemical and excessive manure runoff.

#### **Lessens Soil Erosion**

The pasture grasses form healthy root masses all year long that hold the soil in place, therefore, reducing soil erosion and improving water filtration. In contrast, conventional farming methods to harvest corn, soybeans, and other grains cause soil erosion.

So there you have it; the benefits of Grass Fed, whether it be beef, chicken, or dairy. If you are interested in your health and longevity, protecting the environment, and providing naturally healthy conditions for your Red Poll to thrive then move to a grass fed operation. It is the fountain of youth!

1. S.K. Duckett et al, Journal of Animal Science, (published online) June 2009, "Effects of winter stocker growth rate and finishing system on: III. Tissue proximate, fatty acid, vitamin and cholesterol content."

2. (Ip, C., S. Banni, et al. (1999). "Conjugated Linoleic Acid-Enriched Butter Fat Alters Mammary Gland Morphogenesis and Reduces Cancer Risk in Rats." J Nutr 129(12): 2135-2142.)

3. (Journal of Agriculture and Food Chemistry, June 2008, 56:4775-4782.)

# Carl's Red Poll



*For Sale:  
Bulls, Females and Semen*

*Sires:  
Shuter's Breitling  
JF Wrangler*

*Jim Carl  
(260) 359-2764  
1647 W 100 South  
Huntington, IN 46750*

## RED... it's the new black

*A gentle disposition, great mothering ability, easy keeping, proven  
tenderness on the plate... what more can you ask for?*

**BE BOLD. MAKE A STATEMENT. INVEST IN RED POLL CATTLE.**

*For more information contact:*

**Kentucky Red Poll Assn. President Jeff Doll (859) 743-7923, Fax (859) 694-1672  
or Leo Young, 1057 Reed Lane, Simpsonville, KY 40067 Phone (502) 321-9893**

**Top Quality Red Poll Cattle are Always Available from these Kentucky Red Poll Association Members**

### **Officers**

Jeff Doll, President  
Leo Young, Secretary/Treasurer

### **Members**

**ASHLEY HOUSE FARM**, Home (859) 873-7656  
Edwin Randle.....Office (502) 695-2253  
Rt. 1, Box 319, Versailles, KY 40383

### **BURLEY RIDGE FARM**

Hal Johnson.....(859) 371-6380  
339 Totten Lane, Florence, KY 41042

**BILL DAVIS**.....(270) 242-9037  
6076 Millerstown Rd., Clarkson, KY 42726

### **DOLL'S RED POLLS**

James Doll.....(859) 384-3746  
8880 Camp Ernst Road, Union, KY 41091  
**JEFF DOLL**.....(859) 384-1985

### **ED-MAR-RU FARM**

Ed and Mary First.....(502) 633-1799  
760 Geoghegan Road, Shelbyville, KY 40065

**WILLIAM KLABER**.....(859) 654-5581  
501 Chapel St., Falmouth, KY 41040

### **HARRISON FARMS INC.**

Mark & Kathy Harrison.....(270) 527-1730  
430 Harry Doude Cemetery Rd., Benton, KY 42025

**JAMEY LOCKE**.....(270) 994-2991  
10996 Hopewell Rd., Boaz, KY 42027

**ROB MATTINGLY**.....(859) 854-0214  
PO Box 302, Junction City, KY 40440

**MIKE MCCALL**.....(502) 222-9876  
1701 E. Hwy 22, Crestwood, KY 40014

### **MILLER FARMS**

Adam Miller.....(502) 655-1526  
Chet Miller.....(502) 321-6001  
4867 Buck Creek Rd., Finchville, KY 40022

**JERRY MOORE**.....(270) 779-5229  
232 Little Knob Rd., Smith Grove, KY 42771

### **NEW BEECHLAND FARM**

Jim Young.....(502) 255-3256  
1668 Hwy. 42W, Bedford, KY 40006

**ALBERT PETERSON**.....(270) 781-2710  
2217 Old Scottsville Rd., Alvaton, KY 42122

**GLEN RAMSEY**.....(502) 242-9687  
4300 Millerstown Rd., Clarkson, KY 42726

**BETH WOOD**.....(502) 633-9667  
PO Box 381, Simpsonville, KY 40067

**YOUNG'S RED POLLS**.....(502) 722-5379  
Leo & Joyce Young.....cell (502) 321-9893

Kyle & Alyson Young  
1057 Reed Lane, Simpsonville, KY 40065

# RED POLL

**KENTUCKY  
RED POLL ASSOCIATION**

# A Breeding Soundness Exam on Your Bulls: An Insurance Policy for Breeding

by Kaye Gilbert

When was the last time you had a breeding soundness exam performed on your herd sire? If you have to think about the answer or ask "what is that?", it has been too long and you need to get your herd sire checked.

Dr. Les Anderson, Beef Extension Specialist from the University of Kentucky stated in a recent article on the Ohio Beef Letter that he receives calls from breeders 6-8 times each year regarding issues with breeding cattle. He had one particular rancher call after having his cows pregnancy checked by the rancher's vet. This rancher had 43 fall calving cows. He reported to Dr. Anderson these cows were synchronized for artificial insemination. He also went on to explain they were pasture exposed to one bull for roughly 5 weeks and then pasture exposed to a second bull for 7 weeks. The rancher reported only 22 of his cows conceived, all of which were conceived to the AI date.

Dr Anderson stated "The first question he asked this rancher was the obvious one; did you get a breeding soundness exam (BSE) performed on your bulls?" The rancher's response; "the bulls had one when he bought them but he had not had one done since (2-3 years)." The rancher then had the bulls checked and he found out both were infertile. If only the rancher would have performed a BSE before turning them out.

The first question is what is a BSE? A BSE(Breeding Soundness Exam) is a

Scrotal Circumference Portion of Breeding Soundness Exam				
	12-15 mo	15-20 mo	21-30 mo	30+ mo
	centimeters			
V. Good	35	37	39	40
Good	30-35	31-37	32-39	33-40
Poor	30	31	32	33

fertility exam performed on bulls by a veterinarian. Within this exam, there are three components the veterinary performs.

The first component is the measurement of scrotal circumference. Scrotal circumference is directly correlated with semen production and the bull's ability to service females. A 12-13 month old bull should have a scrotal circumference of at least 30 cm. However, some veterinarians disagree on the threshold, with some stating the circumference should be at least 33 cm. Dependent on the bull's evaluation results on the other components, many times it becomes the owner's decision on what threshold to use.

The second component is a physical exam of the bull. This is to ensure the bull is physically ready for breeding season. The veterinarian will check the bull's feet and leg structure. The veterinarian will also check to verify the bull is free of injury or any sort of infection. Additionally, when the bull is being collected to perform the final component, the veterinarian will also inspect extension, sheath, and additional physical components of the bull's reproductive organs.

The final component is an examination of the bull's semen under a microscope. This is to verify the the sperm cells are normal. Within this examination, the veterinarian will check motility, broken tails, concentration level, and percentage of live sperm. Most veterinarians will then grade the bull as satisfactory, unsatisfactory, or deferred.

Unsatisfactory will be considered sterile and unable to be used for

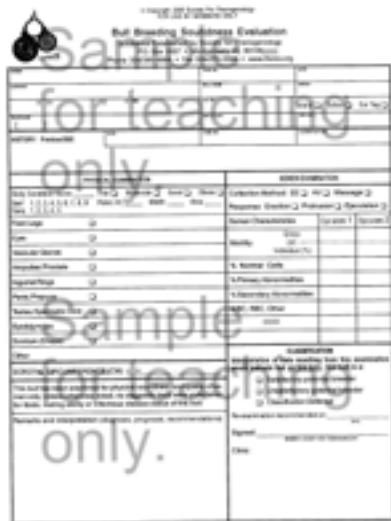
breeding season. Bulls that are deferred will have some irregularities in the ejaculate. By deferring the bull, the veterinarian is recommending a second examination is done to determine his fertility. Many young bulls or bulls being tested after a particularly harsh winter, may be deferred.

Per Dr. Anderson, surveys nationally and in Kentucky indicate that fewer than 30% of cattlemen routinely subject their bulls to a BSE. A BSE, dependent on your veterinarian and your residential location, may cost \$50-\$150. This is a fairly cheap insurance policy to verify if your herd sires are able to be turned out for breeding season. Dr. Anderson stated he was sure the rancher he talked to wished he had gotten a BSE on his bulls before he found out that he had 21 open cows. If the rancher would have invested in a BSE he could have prevented a loss that resulted in the thousands.

Which brings us to the next question. When should a BSE be done and how often? Most veterinarians will strongly recommend a BSE be done each year, 30 days prior to turning your bull out for the breeding season.

In addition to testing your herd sires prior to breeding season, you should always test the bulls you are selling as breeding stock. A BSE 30 days prior to sale date is strongly recommended as an insurance policy that you as the seller are selling a sound bull. A copy of this BSE should be provided to the buyer upon their purchase of the bull. In addition, as a buyer, you should always ask for a copy of the bull's BSE before writing the check.

As consumers, we all purchase insurance of some sort in our daily lives. It may be homeowners, farm liability, or automobile. Regardless of what type of insurance we purchase, this is done as a protection of loss for those items. A \$50-\$150 breeding soundness exam is a cheap insurance policy on your herd sire to prevent a loss that could run into the thousands if the bull turns out to be sterile for any reason.



# AI Approved Sires

In response to questions from breeders regarding a list of AI approved bulls, we have attempted to verify a list of bulls that have been approved by the board. We are missing some of the minutes from past Board Meetings. This is a list of the bulls we have verified to this point in time. If you do not see your bull on this list, please contact the office with the appropriate verification so we can add him to the list.

"A's" Thor	5492
711 Quickstop	210707
Adrian's Jerry	88521
Avalon JC Emperor	90086
Avalon Trooper	88373
B R Classic Heir	5599
Backlands Debonaire	30339
Balla Balla Bellamy	
Bandaroo Landlord 2nd	7576
Bar Seven Big Mac	2000
Baxter's King Robinhood	3686
Baxter's Walkin' E Robinhood	4638
Blue Grass Charmer	88343
BR Replay	5920
Broadcaster Bona	96548
Byshee Romulus (Twin) 26392	92126
Callaway Jerry's Nomad	90138
Capps Leader	31570
Carl's 303 Boy	7861
Carl's Beamin Boy	6280
Carl's New Design	6951
Centerfield Pacer	93885
Centerfield Ranger	93839
Centerfield Skipper	4726
Centerfield Victor	4187
CFF Hercules	208473
Clover Waskasoo Leader	99793
Dalran Pro's Morgan	3403
Daniel's Broadcaster Balancer	98039
DFM Luther	213703
DFM Primetime	214537
Doll's Early Jack	3456
Dunroamin Brahms	98398
Dunroamin Century 21-03	206282
Dunroamin Premium	5990
Esquire's Red Cloud	213087
Esquire's Rolex	203051
FR Baron	203421
Gem's Fortune Mastercraft	96500
GS Aussie Connection	6057
GS Discovery	4688
GS Goodfellow	202403
GS Limit Up	8654
GS Magellan	5668
GS Option II	8324
GS Orbiter	4270
GS Outback	6434
GS Outline	7754
GS Pathfinder	200477
GS Special Edition	8651
GS Taurus Bulba	94563
GS Topper	3723
Hallmark's Favorite Sun	3947
Hallmark's Powerwalker	3083
Hallmark's Skywalker	718
Hallmark's Top Billing	3313
Hallmark's Walkin Architect	1815
Hewlett's Boomerang 66	6912
Hewlett's Challenger 17	5608
Hewlett's Keystone	6048
Hill Top 501	4025
Hill Top Arc Deluxe	8687
Hill Top CH Status	7030
Hill Top Denver	4863
Hill Top Rufftime	1211
Hillwood Walkin' Legacy	1422
HVR Highlander 12th	89422
JC Jasper's Prince Hunter	3044
JF Big Bucks	212687
JF Jackpot	211632
JF Wrangler	212231
JFBJ	213939
JM Luke	212333

Knepp Royal Gem	86463
KS Thunderstorm	212589
Law's Erastus	95501
Lazy S Powerhouse 375	207706
Mackey's Red Eagle	6383
Magnolia Olivell	204640
Maleer Lusus (23678) imp	5712
MARC Hercules	3227
MARC Hercules	3228
MARC Hercules	3231
MARC Hercules	3232
MARC Hercules	3678
MARC Hercules	3679
MARC Hercules	66063
MARC Prestige	92723
MARC Principal	6098
MARC Principal	94951
MARC Raymond	4074
MARC Raymond	4075
MARC Raymond	4076
MARC Raymond	7125
Mardan's Ray's Promise	209020
McMarshall (AU2) 373	206582
Mike Famous Adrian	82920
Minnesota Charmer 9th	82944
MM Century 21-04	207204
MM Hoosier Classic	7019
MM Hoosier Land Marcus	8448
Moreton's Danny Boy	G27239
Oakwood Snowy River	8723
Oakwood Super Sire	URP26530
Oakwood Zorba 2	URPM29319
OC 705	209248
OC Osage Red Boy	206635
Ohio Charmer	95062
Parkstyle Alex	206610
Parkstyle Robinhood	1000
Parkstyle Rocky	210088
Parkwood Monarch	4002
Parkwood Ray-Way	2050
Parkwood Runaway	3085
Pinpur Admiral Chief	91048
Pinpur Altitude	3400
Pinpur Architect	95138
Pinpur Baron	96063
Pinpur Basic	98424
Pinpur Basic Advance	679
Pinpur Basic Kip	47
Pinpur Basic Master	674
Pinpur Beamin' Arc	3177
Pinpur Beamin' Tall	1985
Pinpur Blue Baron	98706
Pinpur Boilermaker	96566
Pinpur Bones	1047
Pinpur Broadcaster	94362
Pinpur Classic	4204
Pinpur Consul	95837
Pinpur Earl	98921
Pinpur Energizer	2965
Pinpur Executive	97427
Pinpur Heritage	92862
Pinpur Kingmaker	91422
Pinpur Longcount	99045
Pinpur Longfellow	96564
Pinpur Movin' On	97532
Pinpur Muntie	93226
Pinpur Newmaker	93223
Pinpur Outreach	670
Pinpur Pro	99590
Pinpur Profile	2348
Pinpur Rambler	96062
Pinpur Regulator	95142
Pinpur Royal	89217

Pinpur Sizemore	99044
Pinpur Starmaster	1741
Pinpur Talkin Tall	1664
Pinpur Top Pro	2346
Pinpur Trackin' Tall	99043
Pinpur Ultimate ET	4327
Pinpur Walkaway	409
Pinpur Walkin' Premier	2971
Pinpur Walkin' Pro	3370
Pinpur Walkin' Tall	98423
Pipur Dialogue	96705
Pipur Escalator	93069
Pipur Magnitude	3900
P-P Astro	4535
PP Hoosier Prelude	4672
Redvue Kingman	99262
RGF RedGate Advancer	2314
Rivulet View BJ Prince	99225
RMR's Sizemaker	4579
Rodeo Buster 17A	30863
Rolling View Nick	89757
Rolling View Oliner	90309
RUR Nighthawk	5533
Seven Springs Quatre Bras	73714
Shamrock Premier II	92967
Sheranbar WT Crispulus	2123
Shirlynne's Powerfellow	2180
Shirlynne's S. Blue Boy	2491
Shuter Ambassador	92371
Shuter's Breiitling	210968
Shuter's Fuzz	211788
Shuter's Kaljiiah	207192
Shuter's Marshall	212464
Shuter's Thunderstruck	208143
Shuter's Tuff Enuff	204756
Small Acres Invader	5021
Small Acres Red Rider	4145
SS Dandy Charmer	87903
Stonebrook Renegade	7945
Tamihana Toms Kingsley CP	ARP4487
TF Voyager	3447
Tomlinson's High Level	2151
U Ark Highlander B4230	15017
W.K. Wheelhorse E.F.	
Wanda's Broadcaster Hallmark	96692
Willow Mag's Gold Coin	7330
Winbro Modern Growth Improver	
WK Austy Oxmoor 508 EF	7077
WK Energizer Two Prestige	5641
Yongerellen Caesar Impeccabull	4903
Yongerellen Grant Invar	4904
Young's Navigator Ray	212980



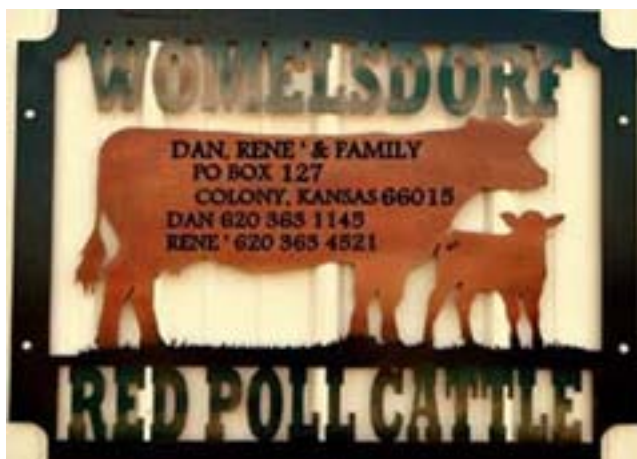
# How Does a Bull Become AI Approved

In the ARPA Bylaws Section L. Conditions of Registry, #2 it states the following: the progeny resulting from Artificial Insemination, which satisfy the Conditions of Registry in all other respects shall be eligible for registry by the owner of the dam. The sire must meet requirements as stated in the rules of the Association. (Amended 2010)

The ARPA Rule 3 states the requirements for the bull in order to be approved as an AI sire. It is the breeder's responsibility to have all the paperwork in order when submitting a request for approval to the board.

Requirements to be completed before the bull may be approved:

- DNA Test of Bull must be on file at Zoetis
- Results of DNA Test must be to the Office prior to the request for approval
- A written request by the breeder asking the board for AI approval must be sent to the office.
- A 6-generation pedigree must accompany the written request. The breeder may provide this pedigree themselves or request the office to print the pedigree.



## STIEBER'S RED POLLS

Raising Red Poll cattle along Historic Route "66" since 1965.

Our goal is, and always has been, to breed quality Red Poll cattle on a grass-based program.

**Jackie & Janna Stieber**

home: 405-258-1029 mobile: 405-258-6388  
910965 S. 3370 Rd., Wellston, OK 74881  
Email: jackiestieber@yahoo.com



**Thank You to Our 2016 Buyers**

Smith Farms, Brent & Brittany Smith, TN  
Sanders Cattle Co., Brant Sanders, TN  
Canebrake Farms, Faron Daniel, TN  
Walter & Michele Sanchez, TX  
(New Breeder)  
Henry Patterson, TX  
Jerri Parker, OK

**Bulls and Heifers For Sale**

Visitors and buyers always welcome!

### Indiana Red Poll Association

#### Officers

President — Gail Spegal  
Vice-President — Linda Hampton  
Secretary-Treasurer — Gordon E. Jackson

#### Directors

Jim Carl Jim Jackson Jeff Koch Gregg Spegal  
National Director: Jim Jackson  
Bull Test: Gail Spegal  
4-H Breed Rep: Jim Jackson  
Open Breed Rep: Gordon E. Jackson  
Indiana Livestock Association: Gail Spegal

#### Members

**Jim & Diane Carl**  
(260) 359-2784  
1647 W 100 S., Huntington, IN 46750

**Gerald Crafton & Family** (317) 392-1090  
Havenwood Farm  
1546 E 375 N, Shelbyville, IN 46176

**Teresa Jackson & Family** (765) 914-1298  
2131 N. Washington Rd., Greens Fork, IN 47345

**Gordon E. Jackson & Family** (765) 468-7779  
14390 E Co. Rd. 350N, Parker City, IN 47368

**Jim Jackson & Family** (765) 586-0198  
2904 N. Washington Rd., Greens Fork, IN 47345

**Joe Jackson** (260) 519-5286  
4398 S. 300 E., Warren, IN 46792

**Carl W. Kestler & Family** (812) 342-6177  
8001 W. Nashville Rd., Columbus, IN 47201

**J.D. & Katrina Miller** (812) 249-2701  
8152 E 100 S, Bowling Green, IN 47833

**Thomas & Janet Moorman**  
7640 S. America Rd., Wabash, IN 46992

**John Rager** (260) 578-6745  
Hilltop Farm 6942 W 1000 N, Roann, IN 46974

**Linda Hampton** (260) 839-5652  
Broken Brick Farm  
7382 E 750 S, South Whitley, IN 46787

**Scot Roederer**  
109993 E. Coffey Dr., Columbus, IN 47203

**Jack & Pam Scher** (260) 356-8804  
6370 N 300 W, Huntington, IN 46750

**Mike & Family & Marilyn Shuter** (765) 754-7370  
Shuter Sunset Farms  
7400 N 400 W, Frankton, IN 46044

**Gail Spegal & Family** (317) 835-7617  
6902 N 400 W, Fairland, IN 46126

**Megan Spegal**  
6931 W. Boggstown Rd.  
Boggstown, IN 46110

**Gregg, Megan & Cameron Spegal**  
(317) 835-7617  
6902 N 400 W, Fairland, IN 46126

**Jeff & Jill Koch** (812) 525-1205  
Koch Farms  
5305 Stockpile Road, Oldenburg, IN 47036

**Wilber & Sheila Stone**  
SomeDay Acres  
8615 Organ Springs Road, Salem, IN 47167

# Advertise in the Next Issue

**ACT FAST!**

Reserve Your  
Spot Today!

Call the ARPA Office  
for more information:  
American Red Poll Association  
Phone: 765-425-4515

## NEW MEMBERS OF THE RED POLL FAMILY

### Indiana

#### **Silverthorn Ranch, Inc**

Nate & Emily Parks  
4485 W CR 1000 N  
Rossville, IN 46065

### Minnesota

#### **Matt & Darci Johnson**

58856 180th Street  
Litchfield, MN 55355

### North Carolina

#### **Tyler Galloway**

233 Owen Drive  
Lake Toxaway, NC 28747

### Pennsylvania

#### **Southview Station**

Jessica Newman  
501 2nd Street  
Athens, PA 18810

### Virginia

#### **Hidden Creek Farm, LLC**

Andrea Young  
2591 Triplett Turn  
Delaplane, VA 20144

### Washington

#### **WSU Twin Vista Ranch**

Martin Fredrickson  
6456 Flagler Road  
Nordland, WA 98358

**Know someone that would enjoy a subscription of the Red Poll Beef Journal?  
If so, go to [www.americanredpolls.com](http://www.americanredpolls.com) to download, complete the  
Subscription Order Form, & get them started!**

### **Shadow Creek Farms**

#### **Red Poll Cattle**

Raising registered stock for the  
commercial cattlemen in the  
Peace River Country  
of British Columbia, Canada

#### **Dean & Marsha Anderson**

[marshascows@hotmail.com](mailto:marshascows@hotmail.com)

**(250)262-5638**

**(250)827-3293**

[www.shadowcreekfarm.com](http://www.shadowcreekfarm.com)



## Rogers Creek Farm

(Est. 2013)

### Red Poll Cattle

"Southern Red Heritage"

Red Wattle Hogs / New Hampshire Red Poultry

[Rogerscreekfarm@gmail.com](mailto:Rogerscreekfarm@gmail.com)



"In his heart a man plans his course, but the LORD determines his steps." - Proverbs 16:9

# FIRST TIME PURCHASER'S OF RED POLL CATTLE

## Alabama

**Carson Hood**  
226 N Tram Road  
Marbury, AL 36051

## Zachary Schlempe

78 Welch Drive  
Murray, KY 42071

## New York

**Andrew Dolan**  
5649 Ziegler Road  
Boonville, NY 13309

## Texas

**Walter & Michele Sanchez**  
1499 S State Hwy 95  
Moulton, TN 77975

## Arkansas

**Robert Stone**  
912 Twin Oaks Trail  
Gepp, AR 72538

**Rachael Blumenfeld**  
170 Independence Drive  
Campbellville, KY 42718

## Oklahoma

**Marry Ann English**  
16892 Highway 82C  
Tahlequah, OK 74464

## Virginia

**Hugh Watkins**  
230 Mountain Side Lane  
Lyndhurst, VA 22952

## Missouri

**McGuire Farms**  
475 Blue Clay Ridge  
Rocky Comfort, MO 64861

## Scott or Teresa Smith

20169 E 920 Road  
Hammon, OK 73650

## Jeff Little

3437 Goose Hill Road  
Ruther Glen, VA 22546

## Wagoner Farms

702 School Road  
Cave City, AR 72521

## Sweet T Farm

Darin Talley  
330 Ridgecrest Drive  
Saddle Brooke, MO 65630

## Pennsylvania

**Amanda & Ryan Ruark**  
512 Briar Ridge Road  
Meshoppen, PA 18630

## Kentucky

**Matt Sandusky**  
887 Perkinson Lane  
Bedford, KY 40006

## Mary Ruble

31095 Cool Water Lane  
Falcon, MO 65470

## Tennessee

**Ryan & Marla Belyew**  
3810 Sulphur Creek Road  
Big Sandy, TN 38221

**Mackey Linville**  
725 Adams Road  
Williamstown, KY 41097

## Western States Red Poll Association

**President:** James Campbell • **Vice President:** Brian Hiebert • **Secretary:** Mike Mammele • **Treasurer:** Amber Gardner  
**Directors:** Sue Fish, Ron Lake, Kenny Leuken

### RED POLL FAMILY BREEDERS

**Wesley B. Bayles, DVM**  
Two Ponds Red Poll Cattle  
1602 Niangua Rd  
Niangua, MO 65713  
417-473-6040

**Sue & Wayne Fish**  
Nine West Oak Canyon  
8899 U.S. Hwy 60  
Barlesville, OK 74003  
918-331-8016

**Brian & Jill Hiebert**  
18605 Woodberry Road  
Mt. Hope, KS 67108  
620-802-2169

**Kenny, Carol & John Lueken**  
Rolling Prairie Ranch  
12693 W State Hwy U  
Hatfield, MO 64458  
660-867-3337

**Steve & Pam Reed**  
Diamond Arrow River Ranch  
82619 River Ave  
Thedford, NE 69166  
308-645-2719

**George & Sally Shaffer**  
G & S Red Polls  
157 Camp Co Rd 1266  
Pittsburg, TX 75686  
903-855-7541

**George Burch**  
Geoshar Ranch Co.  
4661 Hillside Drive  
Rogers, AR 72758  
479-422-3199

**Alex & Melissa Franks**  
Grace Acres Red Poll Cattle  
3689 East Highway CC  
El Dorado Springs, MO 64744  
402-637-6494

**Donald & Josette Kelle**  
3616 Mistletoe Dr  
Ponca City, OK 74601  
580-767-0174

**Mike & Hope Mammele**  
Hillside Farms & Cattle LLC  
3268 236th Street  
Dawson, MN 56232  
320-752-4467

**Rick & Debbie Sappington**  
Arrow Rock Farm  
12901 W Farm Rd 2  
Walnut Grove, MO 65770  
417-788-2624

**Herb Shaffer**  
8871 Madison 3345  
Witter, AR 72776  
479-232-5823

**James & Ledina Campbell**  
14774 Shetland Road  
Granby, MO 64844  
417-638-5000

**Marty & Mary Anne Grabow**  
1151 240th Avenue  
Canby, MN 56220  
507-277-5851

**Ronald & Donna Lake**  
R & D Farm  
7637 Lawrence 1110  
Mt. Vernon, MO 65712  
417-452-2026

**James & Meredith McKee**  
McMarshall Farms  
1634 Pleasantview Road  
Washburn, IL 61570  
309-248-7005

**Dennis & Pam Schoenhals**  
Pamden Red Polls  
130 E Holden Road  
Kremlin, OK 73753  
580-874-2320

**Jackie & Janna Steiber**  
Stieber's Red Polls  
910965 S 3370 Rd  
Wellston, OK 74881  
405-258-6388

**Brian Fairchild**  
Fairchild Farms  
4394 Berkeley Drive  
Everton, AR 72633  
870-754-9377

**Jim & Tina Hansen**  
J & T Farms  
299 Good Hope Road  
Marshfield, MO 65706  
417-859-2630

**Todd & Bonnie Linhardt**  
Redbud Lane Farm  
7408 Scrivner Road  
Jefferson City, MO 65109  
573-496-3516

**Mike & Jan Morgan**  
Morgan Farms  
1725 White Road  
Bates City, MO 64011

**Michael R. Silvers**  
Silvers Farm  
PO Box 152  
Butler, MO 64730  
660-679-1552

**Bill & Angie Wiese**  
Wiese Farms  
12214 E Parallel Road  
Haven, KS 67543  
620-465-3865

### SUPPORTING MEMBERS

**John & Vicki Droz**  
3201 Wayside  
Bartlesville, OK 74006  
918-214-3037

**Willard & Amber Gardner**  
11415 Scrivner Rd.  
Russellville, MO 65074  
573-782-3205

**Ryan Linhardt**  
47 Tellman Road  
Olean, MO 65604  
573-392-3104

**Lorrie Scott**  
Lazy S Farm  
Columbus, KS 66725  
620-762-0598

**Kim Scott**  
Sidewayz Cattle Co.  
6534 SW Greenlawn Rd  
Columbus, KS 66725  
620-717-3944

**Becky & Chris Perdue**  
212 Redwood  
Columbus, KS 66725

**Beverly Voth**  
114 E. H Holden Road  
Kremlin, OK 73753  
580-874-2314

**Neal & Shirley Scott**  
6470 N. E. Liberty  
Weir, KS 66781  
620-396-8310

### FUTURE BREEDERS

**Dylan Gardner, Emma Gardner, William Gardner,  
Shelby Goben, Ashley Lacen, Ella Mae Linhardt,  
Raley Shaffer, Sam Shaffer**

**41** Years of  
Red Poll Experience!

**Carson Farms**  
Red Poll Cattle

Carson Farms is your  
Conception to the Plate Source  
to move your program

**Forward**



**Home of JF Big Bucks**

2014 National Sr Champion Bull

Top Selling Bull and Sale Top at \$5200.00

2013 National Red Poll Sale

**Semen Available**  
order yours today  
\$20/straw F.O.B.  
minimum 10 straws

**Big Bucks sired:**  
**JF BJ**

**2015 National Sale Top Selling Bull**  
**2015 National Grand Champion Bull**

**Big Bucks sires performance with style**

**Offering:**

**Semen:**

JF Big Bucks  
Heterozygous for Salmonella Resistance  
Exportable to most countries

BR Replay  
Homozygous for Salmonella Resistance

Heifer embryos

Bulls and females  
Fullblood, purebred, appendix composites  
(Sim X Angus)

Freezer Beef - USDA inspected

*Thank You* to our customers:

Kris Blakeney NC  
Clemmons Cattle Co MO  
Mountain Cove Farm NC  
Po Boy Farm TN

Red Oak Farm OH  
David Sloan NC  
Louise Walton WA  
Bill Wiese & Family KS

Red Poll & Red Poll composite bulls and females:  $\frac{1}{2}$  Red Poll  $\frac{1}{4}$  Angus  $\frac{1}{4}$  Simmental and purebred females available

Performance tested cattle that will work for commercial and purebred operations

Grass based rotational grazing operation

You can expect the following data from any of the cattle offered for sale:  
birth, weaning, yearling weights, frame scores & DNA results

**Visitors and inquiries  
are always welcome!**

Beef Quality Assurance BQA certified

Updates on our website:  
[www.carsonfarmsredpollcattle.com](http://www.carsonfarmsredpollcattle.com)

Carson Farms Red Poll Cattle  
211 Nixon Rd, Statesville, NC 28625  
Ph (704) 657-5126 | [bcarson@carsonfarmsredpollcattle.com](mailto:bcarson@carsonfarmsredpollcattle.com)



**American Red Poll Association**  
Red Poll Beef Cattle - The Natural Alternative

*Be sure to visit our website  
americanredpolls.com*

### The Red Poll Report!



**E-Newsletter**

Be sure to keep up to date with our monthly E-Newsletter! Released at the beginning of each month, it is ARPA's way to keep in communication with you on a monthly basis.

If you are not getting it, contact Kaye at [americanredpolls@gmail.com](mailto:americanredpolls@gmail.com) with your current email!

**SANDERS  
CATTLE  
COMPANY**



*"Quality Red Poll Cattle"*

Sanders Cattle Company is focused on raising Red Poll cattle that perform on an intense rotational grazing program.

Herd Sire:  
Canebrake Red Mark  
(Reg # 212067)

**Brant and Robert Sanders Jr.**  
Waynesboro, TN 931-332-2857

### Red Polls Available In Virginia

Champion Blood Lines



*Rose Hill Farm*  
1709 Dillons Mill Rd  
Boones Mill, Virginia 24065

(540) 334-7052

## GEOSHAR RED POLL FARM

George & Sharon Burch  
4611 Hillside Drive  
Rogers, AR 72758  
(479) 372-4451  
(479) 422-3199  
[gvburch@nwti.edu](mailto:gvburch@nwti.edu)

Kyle & Kory Burch  
Willard, MO  
(417) 350-6227  
(417) 860-5779



### **FRED**

born 3/8/2015 90 lbs  
12/15/2015 902 lbs  
= 3.96 lb daily gain

Current foundation herd  
from Wiese Farms

Kennedy Burch  
& Fred the Bull

Registered Red Poll Cattle ••••• Grass Operation

# Red Polls Around the Country

## North East

### Hilltop Farm

*Established 1965*

We are breeders of Beef Cattle!  
Some also do well in the show ring.

**Hilltop Sires:**

**Hill Top Thunder Man**  
**BB Star's Tough**

**The Rager Family**

6942 W. 1000 N., Roann, IN 46974  
(260) 578-6745

"Here at Hill Top Farm, yield and grade  
dictate the breeding program."

### MICHIGAN RED POLL ASSOCIATION

[www.michiganredpoll.homestead.com](http://www.michiganredpoll.homestead.com)

Dave Hickman - President  
Gordon Merten - Vice President  
Claudia Libbey - Secretary - Treas

*Michigan Welcomes the  
World Red Poll Congress*

Dave & Sherri Hickman  
West Branch, MI 48661  
989-345-5755  
[Frshenanigan@yahoo.com](mailto:Frshenanigan@yahoo.com)

Thomas & Sally Grutsch  
East Jordan, MI 49727  
231-536-2412

Kent & Claudia Libbey  
East Jordan, MI 49727  
231-536-9773  
[ktclib@gmail.com](mailto:ktclib@gmail.com)

Dan & Melissa Laskey  
13430 Brew Road  
Bretham, MI 49619  
231-299-4741  
[1miLaskey@gmail.com](mailto:1miLaskey@gmail.com)

Chas. & Helena Brozofsky  
Family  
Beulah, MI 49617  
231-325-1144  
[lenapotata@gmail.com](mailto:lenapotata@gmail.com)

Gordon & Janice Merten  
Hart, MI  
231-873-4459  
[jgmert@gmail.com](mailto:jgmert@gmail.com)

## CALHOUN FARM

Simpson and norma Calhoun  
2385 Wood Lenhart Road  
Leavittsburg, OH 44430  
(330) 898-5448

**- INTRODUCING -**  
our herdsire

### CARL'S MACHO MAN

out of

Shuter's Brietling  
and  
CS Lady Faith

We have calves on the ground  
out of Carl's Ricon.

Visitors are Always  
Welcome at the Farm!

**Donald J. Burton & Family**  
Hope, Indiana  
812-546-5998

*Find these ads at  
[www.americanredpolls.com](http://www.americanredpolls.com)*

**APOLLO M FARM**  
In the Hills of Virginia

**RED POLL CATTLE**

Since 1975

Anatolian Shepherds

*Excellent Livestock Guardians*

Barbara  
Morrison

J.L. & Justin  
Morrison

3230 Woolwine Hwy, Stuart, VA 24171  
[apollofarm@embargo.com](mailto:apollofarm@embargo.com)  
276-694-4297

*Visitors & Inquiries Welcome*

## South East



**FAIRCHILD FARMS**

870.754.9377 Brian  
972.207.5999 Greg

Located in the Ozark Mountains of Arkansas  
Pasture Based Quality Red Poll Cattle

[www.fairchild-farm.com](http://www.fairchild-farm.com)

Like us on Facebook



8880 Camp Ernst Road  
Union, KY 41091

**Doll's Red Poll Cattle**  
**Jim and Jeff Doll**

**Raising  
Red Polls  
for the Farm  
and Ranch,  
not the Show Ring**

# Red Polls Around the Country

## Handwork Farm

Visitors Welcome

Quality Red Poll Cattle For Sale

Norman Handwork  
1075 Cty Rd. 154 Corning, AR 72422  
(870) 857-6195

Jr. Partner/Herdsmen  
Brit Bippus (870) 450-7039



## Clover Lawn Farms

The Pock Family

Shirley, Harlen, Ruston and Rondell

52058 162nd St., Avon, MN 55812  
Ph. (507) 437-6088 Fax (507) 434-7179  
e-mail: clfarm@smig.net

Registered Red Poll Bulls For Sale

## ARROW ROCK FARM



Rick & Debbie Sappington  
12901 W. Farm Road 2  
Walnut Grove, MO 65770  
(417) 788-2624

## South West

### Diamond T Red Polls

Darrell & Sherry Thomas  
214-686-3582

roysecitymasons@yahoo.com

### G & S RED POLLS

George & Sally Shaffer & Family  
157 Camp Co Rd 1266 • Pittsburg, TX 75686  
Phone 970-871-6930 • Mobile 970-846-6343

Email: shafgands@gmail.com

For semen shipping information contact:  
www.hawkeyebreeders.com

email: gjensen@hawkeyebreeders.com

Performance and  
Quality Bred In Before  
the Brand Goes On!

Embryos and  
Semen Available



SERVICE  
Locating Red Polls  
For Sale

Over 30 years of  
Complete Herd  
Reporting of performance  
and carcass data.

Introducing our Herd Sire  
**GS King Comanche ET**

*Thanks to Customers*  
Brent Smith of Tennessee  
Stephen Stone of Indiana

## SMITH FARMS

10475 Highway 424  
Yuma, TN 38390



Brent Smith  
731-415-9477

Registered Red Poll Cattle  
"The Balanced Breed"

*R & D Farm*

7637 Lawrence 1110  
Mt. Vernon, MO 65712  
www.randdfarm.com

Phone:  
417-452-2026

E-mail:  
rlake@millertel.net

Spring Hollow Farm  
Only, Tennessee  
Regan Logan (615) 218-3556

## AVALON FARM

OUR EMPHASIS IS ON EASY CALVING  
1.9 CUTABILITY PRIME SHOWN AT THE  
WISCONSIN STATE FAIR

Herbert, Pat, Tyson & Kayleigh Miller  
N2469 CTHQ • Poynette, WI 53955-9612  
(608) 635-4557 • (608) 225-8078

100 Plus years in the Red Poll business

## Black Velvet Ranch

Registered Red Poll Cattle

Herd Bull: Mardan's K. Tonto

Russ & Pam Peterson

blackvelvetranch@meekeroop.net

320-905-0733 Grove City, MN

## MELLOY'S RED POLL

Melvin D. or Lloye C. Peterson  
51663 CSAH 22  
Atwater, MN 56209  
Phone: 320-877-7585

## MARC BANGSBERG

Red Poll bulls for sale or rent  
(608) 272-3710  
9182 Hwy. 27  
Sparta, WI 54656

## West

### Dick & Barb Rodgers



PO Box 335  
Davenport, WA 99122  
e-mail: bdlabcab@ieway.com  
(509) 796-2599

## Midwest

## West

# PINKEYE: EARLY DETECTION AND ACTION RECOMMENDED THIS SUMMER

By Janna Kincheloe and  
Russ Daly, SDSU iGrow

With warm weather approaching, thoughts of many cattlemen around this area have turned to pinkeye, one of the most common and economically damaging cattle diseases. Pinkeye, the common name for infectious bovine keratoconjunctivitis (IBK), is a contagious disease causing inflammation of the cornea and conjunctiva. If left untreated, severe damage to the eye may occur.

Estimated losses each year are around \$150 million due to lost weight gain, reduced milk production, treatment costs, and potential price discounts for affected animals. The moisture that has been received this spring and early summer has gone a long way in initiating much-needed forage growth. However, moist conditions and lush forage can create optimal conditions for pinkeye, as wet weather typically increases the incidence of face flies that irritate eyes and help spread the disease. In addition, tall grass can irritate eyes when cattle lower their heads to graze.

Preventing the disease typically requires a multi-pronged approach including vaccination, fly control, and managing the grazing environment. Even if preventative measures are in place, it is important to be able to detect and treat pinkeye early.

## Early Stage

**Symptoms:** The progression of clinical signs of pinkeye are consistent. Within the first three to five days after infection, cattle blink frequently and have excessive tearing, in addition to redness in the conjunctiva (white part) of the eye. Cattle in this beginning stage will often seek shade, typically decreasing the time they spend grazing. Pain may also contribute to reduced feed intake. After a day or two, these signs progress to a small ulcer in the center of the cornea which appears as a small white spot. The cornea



develops a cloudy blue-grey appearance due to inflammation. One or both eyes may be affected,

and the eye(s) are often held shut due to pain.

**Treatment:** The key to treating pinkeye

effectively is to treat early. The goal of early pinkeye detection and treatment is to eliminate the causative agent (most typically *Moraxella bovis*) by using long-acting antibiotics, often tetracycline. Commercially available non-antibiotic antibacterial topical treatments may also be effective in helping to alleviate pain and discomfort and speed the healing process. Producers should consult with their veterinarians to determine optimal treatment strategies for individual situations. If there appears to be an outbreak in your herd, your veterinarian may recommend using sterile swabs to take samples from affected eyes, in order to grow the causative bacteria for an autogenous vaccine. Autogenous pinkeye



Pink eye clinical signs from mild to severe

vaccines, as well as over-the-counter vaccines, have not uniformly resulted in complete protection from the disease, but may be useful in certain situations.

## Active Stage

**Symptoms:** If left untreated in the early stage of the disease, the ulcer will continue to spread across the cornea, and the eye will become increasingly cloudy. Blood vessels from the outside of the cornea begin to grow to help with healing, which gives the cornea the classical pink appearance. The ulcer will eventually cover most of the cornea and the inflammation will spread to the inner parts of the eye. If this occurs, the inside of the eye fills with a pus-like substance called fibrin that gives the eye a yellow appearance. Rupture of the eyeball is rare but may occur with a severe infection.

**Treatment:** Aggressive treatment with long-acting antibiotics are critical at this

stage of the disease in order to prevent any further damage. Additionally, there is some evidence supporting the use of injectable penicillin in the external layer of the bulbar conjunctiva (white of the eyeball).

A veterinarian should perform this procedure, as improperly placed injections may be ineffective and result in further damage to the eye. Protecting the eye from sunlight by applying an eyepatch can also be very important since ultraviolet rays can activate enzymes that can increase eye damage. This will also reduce shedding of bacteria. If the animal is in a pasture situation where keeping the patch on can be a challenge, construction adhesive can be used instead of the traditional eyepatch adhesive; however, it may be necessary to catch the animal to remove the patch. Also, eyes covered with a patch cannot be further medicated or monitored. Some veterinarians may prefer to suture the eyelid shut if the corneal ulcer is deep and appears likely to rupture. When treating eyes, one should wash hands or change gloves between affected animals to avoid spreading the bacteria further.

## Healing Stage

Once the causative agent is eliminated, the ulcer is quickly covered by epithelium and the eye becomes less painful. Excessive tearing and blinking will subside and blood vessels will recede, but the eye may continue to be a cloudy blue color for one to two weeks. Once this healing occurs, the eye no longer requires antibiotic treatment. Clearing of the edema will begin at the outside edge of the cornea and sight will begin to return. The eyes of most infected cattle heal within 60 days, but may result in a white scar that can remain for the lifetime of the animal.

The most effective way to deal with pinkeye is to stay ahead of it by integrating prevention with broad-based treatment strategies developed in conjunction with a veterinarian as part of a herd health management plan.



# Index of Advertisers

## Arkansas

Esquire Land and Cattle Co.....	35
Fairchild Farms.....	30
Geoshar Red Poll Farm.....	29
Handwork Farm.....	31

## Illinois

McMarshall Farms.....	36
-----------------------	----

## Indiana

Carl's Red Polls.....	22
Don Burton & Family.....	30
Hilltop Farm.....	30
Indiana Red Poll Association.....	25
Jackson Farms.....	2
Parkstyle Farms.....	7
Shuter Sunset Farms.....	34
Spegal's Red Poll Cattle.....	3

## Kansas

Wiese Farms.....	2
Womesldorf Red Poll Cattle.....	25

## Kentucky

Doll's Red Poll Cattle.....	30
Kentucky Red Poll Association.....	22

## Michigan

Michigan Red Poll Association.....	30
------------------------------------	----

## Minnesota

Black Velvet Ranch.....	31
Melloy's Red Poll.....	31
Clover Lawn Farms.....	31

## Missouri

Arrow Rock Farm.....	31
R&D Farm.....	31

## North Carolina

The American Livestock Breeds Conservancy...	7
Carson Farms Red Poll Cattle.....	28
Wilshire.....	32

## Ohio

Calhoun Farm.....	30
Mardan Acres.....	10

## Oklahoma

Stieber's Red Polls.....	25
--------------------------	----

## South Carolina

Rogers Creek Farm.....	26
------------------------	----

## Tennessee

Belyew's Red Poll Cattle.....	9
Sanders Cattle Company.....	29
Smith Family Farms.....	31
Spring Hollow Farm.....	31

## Texas

Diamond T Ranch.....	31
G&S Red Polls (Shaffer Cattle Co).....	31
Texas Red Poll Association.....	18

## Virginia

Apollo M Farm.....	30
Blue Ridge Red Poll Association.....	15
Rose Hill Farm.....	29

## Washington

Dick & Barb Rodgers.....	31
--------------------------	----

## Wisconsin

Avalon Farm.....	31
Marc Bangsberg.....	31
Western States Red Poll Association.....	27
Southern States Red Poll Association.....	19

## Canada

Shadow Creek Farms.....	26
-------------------------	----



**April 15**  
**Spring Journal Deadline**

**Mid May**  
**Spring Journal Released**

**July 15**  
**Fall Journal Deadline**  
**National Sale Entry Deadline**

**Mid August**  
**Fall Journal Released**  
**National Sale Catalog Mailed**

**December 15**  
**Winter Journal Deadline**

**Mid January**  
**Winter Journal Released**

# WILKSHIRE

100% Fullblood Red Poll Genetics!



We have some exceptional bull and heifer prospects from our spring crop of calves with more bone, more muscle, and more natural thickness. Give us a call and come visit our farm. These genetics will work successfully in your operation!

**Genetics + Phenotypes + EPDs + DNA Profiling = High Quality Red Poll Cattle**

# JW

Jeff D. Wilkins  
2100 Wilkins Road  
Burlington, NC 27217  
cell:336-263-0396  
home:336-538-0888  
jdw.wilshire@gmail.com

CHR Participant  
NC Century Farm  
Est. 1907



# Shuter

## SHUTER SUNSET FARMS

### 3 consecutive years raising and exhibiting the National Champion Female.

#### Shuter's Brandy - 2016 National Champion Female

One of the most highly decorated females in quite a while. Bred and Owned by Jacob Shuter and has 7 generations with the Shuter prefix on the bottom side of her pedigree.

Introducing her little brother,  
Shuter's Dakota - 2016 National Champion Bull  
He is a full sib to Brandy.  
Shuter's Tinkerbelle x Shuter's Terrain



#### Consigning to the 2017 Kentucky Beef Expo Sale

##### Shuter's Denver

A Feb 2016 son of Terrain out of  
Shuter's Shari, the dam of Fuzz

##### Shuter's Delila,

A March 2016 daughter of Terrain out of  
Shuter's Melissa, the 2012 Reserve National  
Champion Female exhibited by Garrett Lowes

MIKE, BRIAN & PATRICK SHUTER  
AND FAMILY

7400 N 400 W  
FRANKTON, IN 46044  
FARM: 765-754-7370

MIKE: 765-208-2422  
BRIAN: 765-623-2301  
PATRICK: 765-208-2424

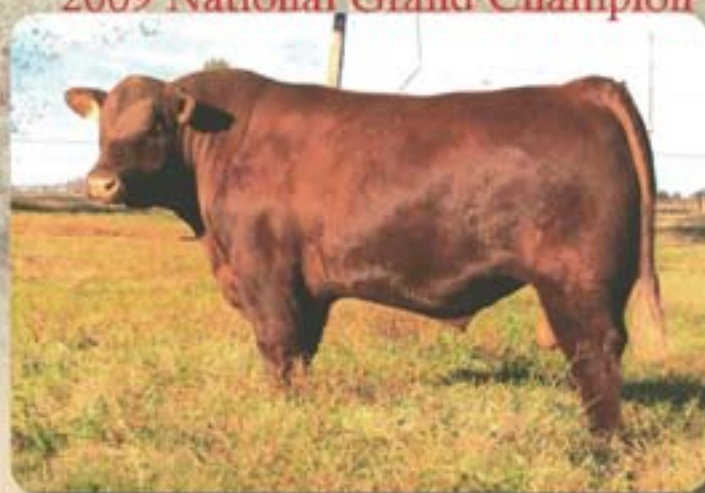
WWW.SHUTERSUNSETFARMS.COM

# Esquire Land & Cattle Co.



## Esquire's Navigator 2009 National Grand Champion

Navigator Semen  
\$100 per Straw  
10 Straw Minimum



Our concentration  
is not on the show ring,  
but we cannot ignore  
the dominance of  
Navigator at the  
National Show.

Esquires Rolex  
2001 National Champion  
(Sire to Esquire Navigator)  
Semen: Call for a Quote

We are a grass  
operation and breed  
cattle that perform  
on grass!

## Esquire's Red Cloud 2013 Reserve National Champion



Semen \$30 per straw 10 Straw Minimum  
Esquire Navigator Son

## DFM Luther 2014 National Grand Champion



Semen \$30 per straw 10 Straw Minimum  
Esquire Navigator Son

## JF BJ 2015 National Grand Champion



Semen \$30 per straw 10 Straw Minimum  
Kentucky & Indiana State Fair Champion

## Quality Females for Sale



**We have good females for sale!  
Open Heifers and Pairs**

Please call any time, we like to talk!  
Raised Red Polls for over 40 years  
Good Udders and calving ease is our priority!

Esquire Land & Cattle Co. Phil Wyrick  
11001 Alexander Rd., Mabelvale, AR 72103

(501) 847-2797 • (501) 517-2534 cell  
[www.esquirelandandcattle.com](http://www.esquirelandandcattle.com)



11523 Violet Ave. Stockport, IA 52651  
Phone: 765-425-4515

Official Publication of the American Red Poll Association

**Red Polls — Ready to Move the Industry!**

**The World's Oldest National Organization for Red Poll Cattle • Founded 1883**

## *The Breed That Meets the Need!*



*Red Poll News* July, August 1953

# *McMarshall Farms*

*Starting 70 years in the Red Poll Business in 2017*

**Jim McKee**

**Meredith McKee**

Washburn, IL

(309) 248-7005

[mcmarshallfarms@outlook.com](mailto:mcmarshallfarms@outlook.com)

*Celebrating  
70  
Years!*

*Welcome  
to Our Guests  
at the  
World Red Poll  
Congress!*