

The 79<sup>th</sup> Annual  
**American Red Poll Association**  
National Meeting & Sale  
October 13-14, 2023  
Smith Livestock Center  
150 Campus Rd, Martin, TN 38237



If you want to call in to bid, please call one of the below listed sale day phone numbers at least an hour prior to the sale beginning in order to register for the sale and to get a buyer's number. Please let them know which lots you are interested in, and someone can call you prior to that lot entering the sale ring. Also note that the plan is to do a live stream of the auction via Facebook Live from the Southern States Red Poll Association Facebook page so that the cattle can be viewed in the sale ring. Call in to bid.

#### Health Requirements for Sale Animals:

Provide 1 Health Paper per Lot for the Veterinarian.

Make sure your animal is health inspected and has all requirements to come to the state of the sale and to be able to sell into any state.

Make sure your vet has the name and address of the sale facility on the health papers.

See information stated under Terms & Conditions.

#### Sale Day Phones

Joe Jackson  
260-519-5286

Brant Sanders  
931-332-2857

David McCall  
502-494-9644

Sale Clerk:  
David McCall

#### Hotel information:

There are several hotels in the area. We don't have a designated headquarter hotel as none of the events will be at a hotel. Below is a list of the closer ones. There are more in the area.

Hampton Inn 731-587-5800  
Days Inn by Wyndham 731-587-9577  
Pecan Grove Cottages 731-587-1918  
Econo Lodge 731-587-4241  
Len Haven Motel & Apartments  
731-587-3807

**Attention consignors. Bedding will be available for purchase at the sale site.**

**If you plan to attend the Friday Banquet and have not turned in a reservation, please let ARPA know at 765-425-4515 or [americanredpolls@gmail.com](mailto:americanredpolls@gmail.com)**

#### Index of Consignor's Lots

National Meeting & Sale Event Schedule:	
Thursday, October 12	
Noon-6pm	Cattle may arrive (150 Campus Rd)
6:00pm	Consignor's Meeting
7:00pm	National Board meeting
Friday, October 13	
9:30am	Registration begins for Annual Meeting
10:00am	Annual Meeting (Champions Club)
7:00pm	Banquet (Champions Club)
Champions Club is at the stadium, 435 University St	
Saturday, October 14	
10:00am	National Sale (150 Campus Rd)
(all times are Central time, same time as Martin, TN)	

Consignor	Bulls	Females
Ryan Belyew, Big Sandy, TN 731-441-1730		24, 25, 26, 27, 28, 31
Dew Farm, Russellville, MO 573-645-7371		21
Doll's Red Polls, Union, KY 859-743-7923		18, 20
Esquire Land & Cattle, Mabelvale, AR 501-517-2534	5	14, 15
Jackson Farms, Greens Fork, IN 765-586-0198		7, 11, 16, 17, 19
Little Creek Farms, Florence, AL 256-436-2003	2	10, 12, 13
Lost Creek Farm, Covington, TN 901-570-0769	1	
Miller Family Farm, Finchville, KY 502-655-1526		6
Sanders Cattle Co, Waynesboro, TN 931-676-7392	3	8, 22
Taylor Land & Cattle, Lakeland, TN 901-338-9686	4	23, 29, 30
Young's Red Polls, Simpsonville, KY 502-321-9893		9





*Serving The Beef Industry Since 1883*

2904 N Washington Rd, Greens Fork, IN 47345

### **Sale Terms & Conditions**

**TERMS:** Terms of the sale are cash unless other arrangements are made with the individual before the sale. The auctioneer will settle any disputes as to bids. Each animal will be sold to the highest bidder without reservations, will be the property of the purchaser and at the purchaser's risk as soon as sold, and can be moved after settlement is made.

**REGISTRATION CERTIFICATES:** All consignments are registered in the Herd Book of the American Red Poll Association. Certificates of registration will be furnished with transfers recorded, free of extra costs to the buyers upon sufficient payment of the lot.

**HEALTH PAPERS:** All cattle will have health papers required by the State of Tennessee. Some states require permits and some Trichinosis tests. The American Red Poll Association encourages consignors to have fertility tests and Trichinosis tests performed on all bulls over 1 year of age. A Veterinarian will be on hand to re-issue health papers. It is advisable to know your own state's health requirements on bringing cattle in from out of state.

**CONSIGNOR'S RESPONSIBILITY:** The seller is the responsible party for all representations made about his cattle. The management of the sale assumes no liability, legal or otherwise, but will endeavor to protect the interest of both the buyer and seller.

**GUARANTEE:** This sale will be conducted under the Red Poll Breeding Guarantee as noted at end of catalog.

**LIABILITY:** The Sale Facility and the American Red Poll Association act as sale agents only for the consignors of this sale and assume no liability as to accidents to or by any animal. The guarantees given above are made by each consignor for his own animals which are selling.

**INSURANCE:** Insurance is highly recommended to cover from the time of purchase until the time of delivery. Insurance will be available thru American Livestock, Inc. Please see clerk for your insurance needs.

**TRANSPORTATION:** The owners and Sale Management will attempt to assist the buyers in hauling their purchases, but the ultimate responsibility is the buyer's.

**ANNOUNCEMENTS:** Announcements made from the auction block take precedence over printed information. Any known breeding dates not listed in the catalog will be given on sale day. Unless otherwise noted in the sale catalog or announced from the auction block, each animal is sold as sound.

**MAIL OR PHONE BIDS:** Mail or phone bids will be handled in a most confidential manner. If you are unable to attend the sale personally, please contact the American Red Poll Association representative, auctioneer or breeder of your choice.

**Cover photo courtesy of Alyson Young.**

# BULLS

## LOTS 1-5



Darlin M40 100% FB  
Reg # 218085 Tattoo: 137  
DOB 3/31/2020 BW:  
BW +1.0 WW+9 YW+18

**Consigned by Lost Creek Farm  
901-570-0769**

Good herd sire. Produces good quality calves. Calves are extremely gentle. He is easy to handle. Bred several heifers to him last year. Calves are good with quiet temperament. Most calved with no assistance. Calves are growing well.

Vaccinated with Express FP 5-VLS HB, Bar-Vac CT/T.

— [ESQUIRE'S ROLEY](#)  
— [ESQUIRE'S NAVIGATOR](#)  
— [ESQUIRE'S DIS MANDY](#)

Sire: [MFF SHELDON](#)

— [M.B. LADDY](#)  
— [MB SHELBY](#)  
— [M.B. FRAN](#)

l: [DARLIN M40](#)

— [PARKSTYLE CISCO](#)  
— [DOLL'S C KNIGHT](#)  
— [DOLL'S L MATILDA](#)

Dam: [MFF 2 KNIGHT](#)

— [J.F. CONNECTOR](#)  
— [MFF CONNECTOR VADOR](#)  
— [YOUNG'S A'S D](#)



LCF Outfit Atlas 100% FB  
Reg # 218587 Tattoo: 137  
DOB 1/26/2021 BW: 78  
BW +1.6 WW+12 YW+20

**Consigned by Little Creek  
Farms 256-436-2003**

Vaccinated with Bovine  
Vira Shield 6, Clostridium  
ALPh-7/mB-2, Moraxella  
Bovis Pinkeye,  
Noromecton

— [PAMDEN'S RICO BUFF](#)  
— [ESQUIRE'S PAPEON](#)  
— [ESQUIRE'S R. COPY](#)

Sire: [CANEBRAKE OUTFITTER 732](#)

— [GS GOODFELLOW](#)  
— [REINERT'S RUTH 903](#)  
— [LAZY S RHONDA'S GIRL](#)

l: [LCF OUTFIT ATLAS 137](#)

— [HILL TOP ST FLASHIN' RED](#)  
— [DANIEL'S HT PROFILE](#)  
— [CARL'S DESIRE PROFILE](#)

Dam: [DANIEL'S PROFILE JAN](#)

— [HILL TOP ST FLASHIN' RED](#)  
— [DANIEL'S HT MACIE](#)  
— [LADY MARSHALL \(S\) 955](#)



LCF Outfit Atlas







SCC Sebastian 100% FB  
 Reg # 219570 Tattoo: 231  
 DOB 11/8/2022 BW: 80  
 BW +1.9 WW+15 YW+27

— [WFB HIGH MARK PP640](#)

— [CANEBRAKE RED MARK](#)

— [HILL TOP B ALEXIA](#)

Sire: [SCC RED MARK 831](#)

— [ARROW ROCK PL 718](#)

— [RFF PETUNIA 1003](#)

— [WFB PETUNIA MM 724](#)

: [SCC SEBASTIAN](#)

— [GS SPECIAL EDITION](#)

— [GS KING COMANCHE ET](#)

— [JG GYPSEY BELL](#)

Dam: [GS KC NATALIE GS847](#)

— [M-M CENTURY 21-04](#)

— [DT CENTURY E.M. NATALIE](#)

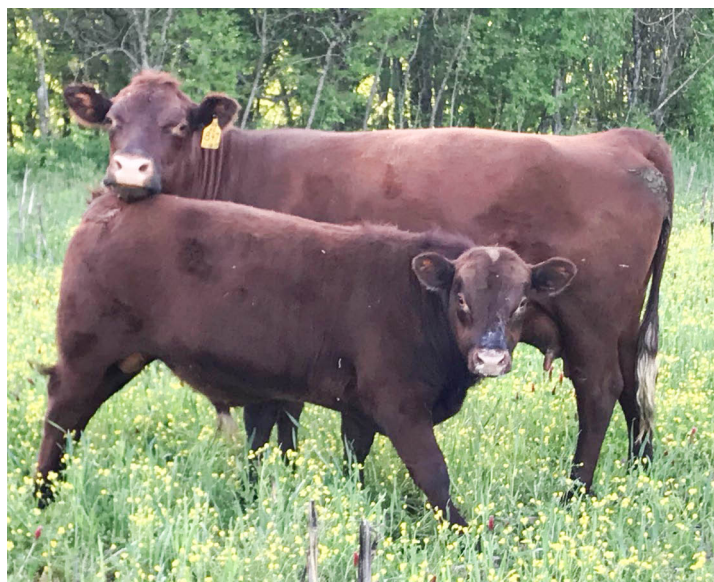
— [GS EDITION M NATALIE](#)

**Consigned by Sanders Cattle  
 Co 931-332-2857**

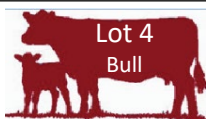
Stout, deep bodied young  
 bull. We think he could be the  
 best we have ever raised.

Deep cherry red in color, he  
 definitely has the looks.

Sebastian is out of our Red  
 Mark bull line. His dam was  
 purchased from George  
 Shaffer. She consistently has a  
 great calf. This fella has a lot  
 of potential. Vaccinated with  
 2 rounds of Vira Shield 6.



SCC Sebastian at 5 months old



TRP PWRHSE Perfection 100% FB  
 Reg # 219584 Tattoo: T207  
 DOB 12/15/2022 BW: 73  
 BW +1.4 WW+11 YW+20

— [LAZY S POWERHOUSE](#)

— [GLEN'S POWERHOUSE LANCELOT](#)

— [DOLL'S C INTRIGUE](#)

Sire: [JB POWERHOUSE CELEBRITY 14](#)

— [WILKSHIRE PROMISE 5101 1206](#)

— [CELEBRITY F 1223 1520](#)

— [WILKSHIRE SUPERSIRE 9103 1223](#)

: [TRP PWRHSE PERFECTION 029](#)

— [SHUTER'S MAGIC STICK](#)

— [CHEROKEE MAGIC](#)

— [OC SHOWTIME MISS](#)

Dam: [DZ CHEROKEE TERESA](#)

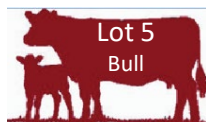
— [MCCLURKIN MR. B 54](#)

— [MCCLURKIN 54-305-725](#)

— [MCCLURKIN SEC STARLETT](#)

**Consigned by Taylor Land &  
 Cattle 901-338-9686**

A nice bull calf of  
 Powerhouse/Shuter  
 bloodlines. This calf has a  
 strong shoulder and good  
 length of hip and is well  
 muscled and thick. Will make  
 someone a good herd sire.  
 Vaccinated with Triangle 10  
 HB Bovilis 20/20 Vision with  
 Spur and OCU Guard MB.



Esquire's Top Flight 100% FB  
 Reg # 219560 Tattoo: 301  
 DOB 1/26/2023 BW: 73  
 BW +3.3 WW+18 YW+27

— [ESQUIRE'S ROLEX](#)

— [ESQUIRE'S NAVIGATOR](#)

— [ESQUIRE'S DIS MANDY](#)

Sire: [DFM ECLIPSE 840](#)

— [DRM BOY NAMED SUE](#)

— [DRM SUESIE Q](#)

— [DRM SHAMROCK SUE](#)

: [ESQUIRE'S TOP FLIGHT](#)

— [ESQUIRE'S NAVIGATOR](#)

— [DFM LUTHER](#)

— [YOUNG'S JB EMILY II](#)

Dam: [ESQUIRE'S L. SKITTLES 815](#)

— [ESQUIRE'S SILVER CHIP](#)

— [ESQUIRE'S SC SKITTLES](#)

— [ESQUIRE'S N. CARY](#)

**Consigned by Esquire Land &  
 Cattle 501-517-2534**

Esquire's Top Flight is sired by  
 McCall's Eclipse, national  
 champ. His grand sire is  
 Esquire's Navigator, national  
 champ. His great grand sire is  
 Esquire's Rolex, national champ.  
 His temperament is low key.  
 Smooth lines and muscle.  
 Smooth shoulders for calving  
 ease. Should mature at 1750  
 pounds. First time on halter no  
 fight, pleasure to be around.



Esquire's Top Flight

# COWS

LOTS 6-9

## Farm Bureau

Tennessee

®



Lot 6

Cow/Calf

MFF J 15 V

Reg # 214518

DOB 6/30/2015

BW +1.5 WW+18

100% FB

Tattoo: M55

BW: 56

YW+33

[DUNROAMIN CENTURY 21](#)

[PARKSTYLE CISCO](#)

[P.S. MARCUS LINDA II](#)

Sire: [DOLL'S C KNIGHT](#)

[YOUNG'S BIG A IMAGE](#)

[DOLL'S L MATILDA](#)

[DOLL'S ST MARETTA](#)

l: [MFF J 15 V](#)

[PARKSTYLE CISCO](#)

[DOLL'S C KNIGHT](#)

[DOLL'S L MATILDA](#)

Dam: [MFF KNIGHT V](#)

[J.F. CONNECTOR](#)

[MFF CONNECTOR VADOR](#)

[YOUNG'S A'S D](#)

**Consigned by Miller Family Farm  
502-655-1526**

This cow is pulled from the heart of our program. She has many more years to add value to your herd. Due for a September calf sired by Red Oak LJ Chief, 217945, look for updates prior to the sale. Vaccinated for Triangle 10 HB, 2020 Vision 7.



MFF J 15 V



Lot 7

Cow/Calf

Doll's W Katrina

Reg # 215488

DOB 4/1/2016

BW +1.6 WW+17

100% FB

Tattoo: D166

BW: 65

YW+31

[PARKSTYLE CISCO](#)

[DOLL'S C PIKEVILLE](#)

[DOLL'S A TONYA](#)

Sire: [JF WILDCAT](#)

[CARL'S OUTLAW](#)

[J.F. GINGER](#)

[JF BLOSSOM](#)

: [DOLL'S W KATRINA](#)

[M-M HOOSIER T-BONE](#)

[HOOSIER LAND T-BONE JR](#)

[HOOSIER PRE-AB MARY GR26h](#)

Dam: [BR'S HL KATRINA II](#)

[B.R.'S WONDER](#)

[B.R.'S KATRINA](#)

[SHIRLEY M. BASIC LEADER](#)

**Consigned by Jackson Farms  
765-586-0198**

This cow is sired by JF Wildcat 213278, the 2014 National Reserve Grand Champion Bull. Katrina has been a consistent producer for us. As a 7-year-old, she has several years left to produce some top-quality calves for you. Should have a fine Sept calf by her side come sale day sired by Shuter's Freedom, 217011. Vaccinated with Vision 7, CattleMaster Gold, Inforce 3.



Doll's W Katrina





SCC Reata  
 Reg # 219009  
 DOB 11/25/2016  
 BW +1.6    WW+15    YW+27  
 100% FB  
 Tattoo: 125  
 BW: 75



SCC Reata

— [GS POWER POINT](#)  
 — [WFB HIGH MARK PP640](#)  
 — [WFB ARLIS MR 144](#)  
**Sire: [CANEBRAKE RED MARK](#)**  
 — [HILLTOP T BOSS](#)  
 — [HILL TOP B ALEXIA](#)  
 — [HILL TOP ARC ALEXIA](#)  
**: [SCC REATA 1601](#)**  
 — [WFB JOHN PL361](#)  
 — [ARROW ROCK PL 718](#)  
 — [THREE C'S RE CARMEN](#)  
**Dam: [RFF PETUNIA 1003](#)**  
 — [MACKEY'S RE MICMAC](#)  
 — [WFB PETUNIA MM 724](#)  
 — [W.H.W. PET MB307](#)

**Consigned by Sanders Cattle Co 931-332-2857**

Coming seven-year-old cow, she is in her prime! We have two full sisters and have kept back replacements out of her. Otherwise, she would not be offered for consideration. She has been exposed to SCC Promise Land, 219182, from 4/1/23 to 7/15/23 for spring calving, to be confirmed by sale day.



Young's NR 914  
 Reg # 219593  
 DOB 4/20/2019  
 BW +1.3    WW+14    YW+24  
 100% FB  
 Tattoo: Y920  
 BW:

# BRED HEIFERS

## LOTS 10-13

— [ESQUIRE'S ROLEX](#)  
 — [ESQUIRE'S NAVIGATOR](#)  
 — [ESQUIRE'S DIS MANDY](#)  
**Sire: [YOUNG'S NAVIGATOR RAY](#)**  
 — [WFB KING RICHARD MR219](#)  
 — [YOUNG'S EA KING](#)  
 — [YOUNG'S ELONDA ANN](#)  
**: [YOUNG'S NR 914](#)**  
 — [LEVEL VIEW NEW LOOK](#)  
 — [YOUNG'S LV KING](#)  
 — [YOUNG'S KING JOAN](#)  
**Dam: [YOUNG'S LV 914](#)**  
 — [EMR ANNA'S INVADER](#)  
 — [YOUNG'S BIG A EMILY](#)  
 — [WFB EMILY MR914](#)

**Young's Red Polls 502-321-9893**

A young, small framed cow with an April heifer calf at side. Breeding info on sale say.



Lady 251  
 Reg # 219073  
 DOB 2/1/2022  
 BW +1.0    WW+10    YW+17  
 100% FB  
 Tattoo: 251  
 BW: 72



Lady 251

— [PAMDEN'S RICO BUFF](#)  
 — [ESQUIRE'S PAPEON](#)  
 — [ESQUIRE'S R. COPY](#)  
**Sire: [CANEBRAKE OUTFITTER 732](#)**  
 — [GS GOODFELLOW](#)  
 — [REINERT'S RUTH 903](#)  
 — [LAZY'S RHONDA'S GIRL](#)  
**al: [LADY 251](#)**  
 — [HILL TOP ST FLASHIN' RED](#)  
 — [DANIEL'S HT PROFILE](#)  
 — [CARL'S DESIRE PROFILE](#)  
**Dam: [DANIEL'S PROFILE EVIE](#)**  
 — [HILL TOP ST FLASHIN' RED](#)  
 — [DANIEL'S HT BONIE](#)  
 — [DANIEL'S PROFILE EMILEEN](#)

**Consigned by Little Creek Farms 256-436-2003**

Pasture exposed to Gladiator 76, 219187, 6/10/23-10/6/23. To be confirmed bred by sale day. Vaccinated with Bovine Vira Shield 6, Clostridium ALPH-7/mB-2, Moraxella Bovis Pinkeye, Ivermectin





JF BS Dolly  
Reg # 219169  
DOB 3/14/2022  
BW +1.8   WW+19   YW+30

100% FB  
Tattoo: J205  
BW: 78

**Consigned by Jackson Farms  
765-586-0198**

This heifer is sired by JF Big Shot, 216885, the 2019 National Reserve Grand Champion Bull. Look at her pedigree and trace it a little further back and you will see some more top-quality animals. Exposed from 6/11 to 7/19 to JF Guns N Roses, 219075, the 2022 National Grand Champion Bull. Will confirm pregnancy prior to sale. This will be one of the first calves out of this promising young bull. Vaccinated with Vision 7, Bovi-Shield Gold BVD, Inforce 3.



JF BS Dolly J205

- [HILL TOP THUNDER MAN](#)
- [HILL TOP TM EXPO](#)
- [HILL TOP W DREAM STAR](#)
- Sire: [JF BIG SHOT J819](#)
- [DOLL'S C KNIGHT](#)
- [MFF COMET](#)
- [YOUNG'S STAR D KING](#)

d: [JF BS DOLLY J205](#)

- [J.F. Y2K COMPATIBLE](#)
- [JF SONNY BOY](#)
- [DOLL'S R FLO](#)

Dam: [JF DESIREE J721](#)

- [J.F. ALEX](#)
- [JF MARGIE](#)
- [C.D.F. NANCY ANN \(M\)](#)



Warren's Warrior Jan W001 100% FB  
Reg # 219225   Tattoo: W01  
DOB 3/13/2022   BW: 55  
BW +1.8   WW+12   YW+22

**Consigned by Little Creek  
Farms 256-436-2003**

Pasture exposed to Gladiator 76, 219187, 6/10/23-10/6/23. To be confirmed bred by sale day. Vaccinated with Bovine Vira Shield 6, Clostridium ALPH-7/mB-1, Moraxella Bovis Pinkeye, Ivermectin



Warren's Warrior Jan W001



Warren's Kara W002 100% FB  
Reg # 219226   Tattoo: W02  
DOB 3/25/2022   BW: 60  
BW +2.1   WW+14   YW+25

**Consigned by Little Creek  
Farms 256-436-2003**

Pasture exposed to Gladiator 76, 219187, 6/10/23-10/6/23. To be confirmed bred by sale day. Vaccinated with Bovine Vira Shield 6, Clostridium ALPH-7/mB-1, Moraxella Bovis Pinkeye, Ivermectin



Warren's Kara W002

- [HF 474-10](#)
- [HF 507-9](#)
- [W.K. 507-1-7](#)
- Sire: [MACA 830](#)
- [PARKSTYLE ALEX](#)
- [MACA 401](#)
- [YOUNG'S JB YEK](#)

i: [WARREN'S KARA W002](#)

- [PINPUR ALTITUDE GR30h](#)
- [P-P HOOSIER PRELUDE GR31](#)
- [PINPUR SIZEMORE JANE GR22](#)

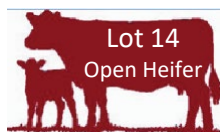
Dam: [MFF AK'S ALEXIS M96](#)

- [PARKSTYLE AJAX](#)
- [PARKSTYLE AJ'S LEXIE](#)
- [PARKSTYLE ALEXIS](#)



# First Choice Farm & Lawn, Eads, TN

## OPEN HEIFERS LOTS 14-31



Esquire's P.T. Cary  
Reg # 219386  
DOB 9/2/2022  
BW +2.0 WW+12 YW+20

100% FB  
Tattoo: 247  
BW: 70  
YW+20

— [PARKSTYLE ALEX](#)

— [DFM BO](#)

— [M.B. KALIAH'S DAISY](#)

Sire: [DFM PRIMETIME](#)

— [ESQUIRE'S NAVIGATOR](#)

— [DFM Q'S PRINCESS](#)

— [DRM SUESIE Q](#)

l: [ESQUIRE'S P.T. CARY 247](#)

— [ESQUIRE'S ROLEY](#)

— [ESQUIRE'S NAVIGATOR](#)

— [ESQUIRE'S DIS MANDY](#)

Dam: [ESQUIRE'S N. CARY](#)

— [HEWLETT'S BOOMERANG 66](#)

— [ESQUIRE'S BOOCAR](#)

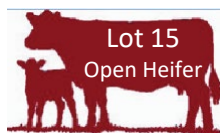
— [ESQUIRE'S BLUE CAROL III](#)

**Consigned Esquire Land &  
Cattle 501-517-2534**

Esquire's PT Cary 247 is sired by Primetime, national reserve champ. He sired top selling lot in national sale two years ago. His females are great cows and work good in our program. She has the potential to be your foundation cow.



Esquire's P.T. Cary 247



Esquire's P.T. June  
Reg # 219387  
DOB 9/2/2022  
BW +1.5 WW+12 YW+19

100% FB  
Tattoo: 248  
BW: 75  
YW+19

— [PARKSTYLE ALEX](#)

— [DFM BO](#)

— [M.B. KALIAH'S DAISY](#)

Sire: [DFM PRIMETIME](#)

— [ESQUIRE'S NAVIGATOR](#)

— [DFM Q'S PRINCESS](#)

— [DRM SUESIE Q](#)

l: [ESQUIRE'S P.T. JUNE 248](#)

— [ESQUIRE'S ROLEY](#)

— [ESQUIRE'S XCALABER](#)

— [ESQUIRE'S BOOCAR](#)

Dam: [ESQUIRE'S X. BETH](#)

— [PAMDEN'S RICO BUFF](#)

— [ESQUIRE'S B. BETH](#)

— [ESQUIRE'S BETH](#)

**Consigned Esquire Land &  
Cattle 501-517-2534**

Esquire's PT June 248, sired by reserve national champ Primetime. Will mature into a cow with volume. Has great milk production in pedigree. Not a show horse but a work horse.



Esquire's P.T. June 248





Lot 16  
Open Heifer

JF Bentley Anna  
Reg # 219364  
DOB 9/21/2022  
BW +2.2 WW+15 YW+24

100% FB  
Tattoo: J217  
BW: 84  
YW+24

— [PINPUR VINTAGE '72' GR29](#)

— [SHUTER'S CARTER](#)

— [ESQUIRE'S DIAMOND PENDANT](#)

Sire: [PARKSTYLE BENTLEY](#)

— [SHUTER'S TERRAIN](#)

— [PARKSTYLE JESSLYNN](#)

— [PARKSTYLE RKY SPARKLES](#)

I: [JF BENTLEY ANNA J217](#)

— [HILLTOP T BOSS](#)

— [HILL TOP B DOMINANT](#)

— [HILL TOP ST TESSA](#)

Dam: [YOUNG'S BD ANNA LILLY](#)

— [EMR ANNA'S INVADER](#)

— [YOUNG J LILLY](#)

— [JF LILLY](#)

**Consigned by Jackson Farms**  
**765-586-0198**

This heifer is sired by Parkstyle Bentley, 216596, the 2018 National Grand Champion Bull and is out of a Young cow that has the distinction of being the top selling cow in 2 different sales. This cow is the biggest bodied cow we own. Buy this heifer with confidence.

Vaccinated with Vision 7, Bovi-Shield Gold BVD, Inforce 3.



JF Bentley Anna J217



Lot 17  
Open Heifer

JF Bentley Gretchen  
Reg # 219369  
DOB 9/26/2022  
BW +2.3 WW+15 YW+22

100% FB  
Tattoo: J220  
BW: 80  
YW+22

— [PINPUR VINTAGE '72' GR29](#)

— [SHUTER'S CARTER](#)

— [ESQUIRE'S DIAMOND PENDANT](#)

Sire: [PARKSTYLE BENTLEY](#)

— [SHUTER'S TERRAIN](#)

— [PARKSTYLE JESSLYNN](#)

— [PARKSTYLE RKY SPARKLES](#)

al: [JF BENTLEY GRETCHEN J220](#)

— [PINPUR VINTAGE '72' GR29](#)

— [SHUTER'S CARTER](#)

— [ESQUIRE'S DIAMOND PENDANT](#)

Dam: [SHUTER'S GRETCHEN 937](#)

— [SHUTER'S WFB REMINGTON](#)

— [SHUTER'S TINKERBELL](#)

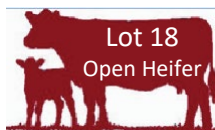
— [SHUTER'S LESLIE](#)

**Consigned by Jackson Farms**  
**765-586-0198**

This heifer is sired by Parkstyle Bentley, 216596, the 2018 National Grand Champion Bull. I am very impressed with the amount of body exhibited by this heifer at a young age. We just don't have room to keep her. She promises to be a top cow. Vaccinated with Vision 7, Bovi-Shield Gold BVD, Inforce 3.



JF Bentley Gretchen J220



Lot 18  
Open Heifer

Doll's "A" Lyra  
Reg # 219573  
DOB 10/2/2022  
BW +1.2 WW+12 YW+27

100% FB  
Tattoo: 2214  
BW:  
YW+27

— [DOLL'S C PIKEVILLE](#)

— [JF WILDCAT](#)

— [J.F. GINGER](#)

Sire: [DOLL'S W ADONIS 201D](#)

— [PARKSTYLE CISCO](#)

— [DOLL'S C ELITE](#)

— [DOLL'S A TONYA](#)

I: [DOLL'S A LYRA 2214](#)

— [DOLL'S C PIKEVILLE](#)

— [JF WILDCAT](#)

— [J.F. GINGER](#)

Dam: [DOLL'S W LORI 1812](#)

— [PARKSTYLE ALEX](#)

— [DOLL'S A CARDINAL](#)

— [LAZY S #814](#)

**Consigned by Doll's Red Polls**  
**859-743-7923**



Keep on  
**GRAZING GRASS**







JF Bentley Moore 100% FB  
Reg # 219371 Tattoo: J224  
DOB 10/9/2022 BW: 67  
BW +2.1 WW+17 YW+26

— [PINPUR VINTAGE '72' GR29](#)

— [SHUTER'S CARTER](#)

— [ESQUIRE'S DIAMOND PENDANT](#)

Sire: [PARKSTYLE BENTLEY](#)

— [SHUTER'S TERRAIN](#)

— [PARKSTYLE JESSLYNN](#)

— [PARKSTYLE RKY SPARKLES](#)

I: [JF BENTLEY MOORE J224](#)

— [SHUTER'S CARTER](#)

— [SHUTER'S FREEDOM 840](#)

— [SHUTER'S BRANDY](#)

Dam: [JF F MOORE J014](#)

— [JF ALEX](#)

— [JF DEMI](#)

— [JF CELESTE](#)

**Consigned by Jackson Farms  
765-586-0198**

Another big-bodied heifer. This heifer is sired by Parkstyle Bentley, 216596, the 2018 National Grand Champion Bull. We leased Bentley to breed to our top fall-calving cows and were very pleased with the outcome. You can share in this by buying the 3 heifers we have consigned out of this group. Vaccinated with Vision 7, Bovi-Shield Gold BVD, Inforce 3.



JF Bentley Moore J224



Doll's "A" Sabrina 100% FB  
Reg # 219574 Tattoo: 2215  
DOB 10/17/2022 BW:  
BW +1.6 WW+15 YW+31

— [DOLL'S C PIKEVILLE](#)

— [JF WILDCAT](#)

— [JF GINGER](#)

Sire: [DOLL'S W ADONIS 201D](#)

— [PARKSTYLE CISCO](#)

— [DOLL'S C ELITE](#)

— [DOLL'S A TONYA](#)

I: [DOLL'S A SABRINA 2215](#)

— [DOLL'S C PIKEVILLE](#)

— [JF WILDCAT](#)

— [JF GINGER](#)

Dam: [DOLL'S W SHELBY 1810](#)

— [PARKSTYLE CISCO](#)

— [DOLL'S C SERENA](#)

— [DOLL'S L SYNA](#)

**Consigned by Doll's Red Polls  
859-743-7923**



**farmCREDIT**  
MID-AMERICA



DEW Molly 100% FB  
Reg # 219059 Tattoo: D003  
DOB 10/23/2022 BW:  
BW +1.1 WW+13 YW+22

— [OAKWOOD ZAMBESI](#)

— [OAKWOOD ZORBA 2](#)

— [OAKWOOD EVA 397](#)

Sire: [MACK D002](#)

— [YOUNG'S NAVIGATOR RAY](#)

— [AK'S RAY HILLTOP](#)

— [HILL TOP W TOY](#)

I: [DEW MOLLY D003](#)

— [SHUTER'S LAREDO](#)

— [SHUTER'S FUZZ](#)

— [SHUTER'S SHARI](#)

Dam: [LIBERTY D001](#)

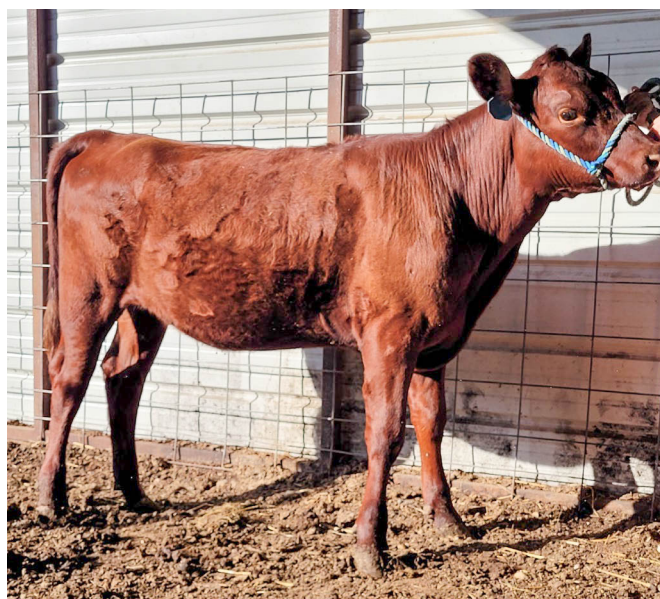
— [YOUNG'S NAVIGATOR RAY](#)

— [AK'S RAY HILLTOP](#)

— [HILL TOP W TOY](#)

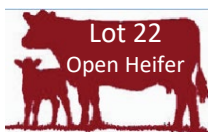
**Consigned by DEW Farms  
573-645-7371**

Vaccinated with Virashield.



DEW Molly D003





SCC Mandy  
Reg # 219569  
DOB 12/12/2022  
BW +1.9    WW+13    YW+22  
Tattoo: 233

— [ESQUIRE'S NAVIGATOR](#)

— [JMLUKE](#)

— [M.B. KALIJAH'S DAISY](#)

Sire: [CANEBRAKE OPTIMIZER PB13](#)

— [JF BIG BUCKS](#)

— [PBF CUTIE PIE #87 PB10](#)

— [CFF 87](#)

: [SCC MANDY 233](#)

— [WFB HIGH MARK PP640](#)

— [CANEBRAKE RED MARK](#)

— [HILL TOP B ALEXIA](#)

Dam: [SCC REATA 1701](#)

— [ARROW ROCK PL 718](#)

— [REF PETUNIA 1003](#)

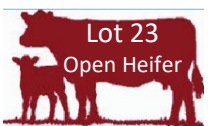
— [WFB PETUNIA MM 724](#)

**Consigned by Sanders Cattle  
Co 931-332-2857**

Very classy young heifer  
with exceptional depth and  
feminine look. Mandy's  
dam is one of our best  
cows. We expect she will  
have an excellent udder.  
Vaccinated with 2 rounds  
of Vira Shield 6.



SCC Mandy 233



TRP PWRHSE Pledge 010 100% FB  
Reg # 219587  
DOB 1/2/2023  
BW: 74  
BW +1.4    WW+14    YW+25  
Tattoo: T202

— [LAZY S POWERHOUSE](#)

— [GLEN'S POWERHOUSE LANCELOT](#)

— [DOLL'S C INTRIGUE](#)

Sire: [JB POWERHOUSE CELEBRITY 14](#)

— [WILKSHIRE PROMISE 5101 1206](#)

— [CELEBRITY F 1223 1520](#)

— [WILKSHIRE SUPERSIRE 9103 1223](#)

: [TRP PWRHSE PLEDGE 010](#)

— [MCMARSHALL M1151](#)

— [WILKSHIRE MCM1151 931 1423](#)

— [WILKSHIRE ZORBA 5537 931](#)

Dam: [CELEBRITY 1151 1223 1833](#)

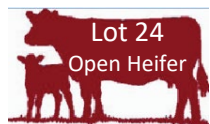
— [OAKWOOD SUPER SIRE](#)

— [WILKSHIRE SUPERSIRE 9103 1223](#)

— [MARDAN'S P9103](#)

**Consigned by Taylor Land &  
Cattle 901-338-9686**

Pledge is out of a cow who is a  
great example of what you  
want in your cow herd. Expect  
a good udder and strong  
maternal characteristics.  
Vaccinated with Triangle 10 HB  
Bovilis 20/20 Vision with Spur  
and OCU Guard MB.



BG38  
Reg # 219578  
DOB 1/7/2023  
BW: 75  
BW +1.2    WW+17    YW+29  
Tattoo: BG38

— [MCMARSHALL M1151](#)

— [WILKSHIRE MCM1151 931 1423](#)

— [WILKSHIRE ZORBA 5537 931](#)

Sire: [CELEBRITY 1151 1355 1855](#)

— [OAKWOOD ZORBA 2](#)

— [WILKSHIRE ZORBA 1116 1355](#)

— [WILKSHIRE ZORBA2 88 1116](#)

il: [BG38](#)

— [MARC RAYMOND 26026](#)

— [MARDAN'S RAY'S PROMISE](#)

— [415 415](#)

Dam: [GLEN'S PROMISE 47](#)

— [LAZY S POWERHOUSE](#)

— [GLEN'S POWERHOUSE KATE](#)

— [GLEN'S PARKSTYLE RYLEE](#)

**Consigned by Belyew Farms  
731-441-1730**

Vaccinated with  
Vira Shield 6+V25 HB Somnus,  
Alpha -7 MB-1,  
Moraxella Pinkeye,  
Cydectin Wormer.



BG38





BG40  
Reg # 219579  
DOB 2/1/2023  
BW +2.2    WW+15    YW+25

100% FB  
Tattoo: BG40

— [LAZY S POWERHOUSE](#)  
— [GLEN'S POWERHOUSE LANCELOT](#)  
— [DOLL'S C INTRIGUE](#)

Sire: [JB POWERHOUSE INVADER](#)

— [HTF IMA HOSS TOO](#)  
— [J.B.'S ROSE](#)  
— [J.M.'S ROSE](#)

I: [BG40](#)

— [POBOY'S LITTLE MAN](#)  
— [MM ROCK ON](#)  
— [RPR DOLCE U166](#)

Dam: [JB'S POWERHOUSE MM ROXIE](#)

— [GLEN'S POWERHOUSE LANCELOT](#)  
— [JB ELLEN LANCELOT](#)  
— [HOSS'S LACEY PRIS](#)

Consigned by Belyew Farms  
731-441-1730

Vaccinated with  
Vira Shield 6+V25 HB Somnus,  
Alpha -7 MB-1,  
Moraxella Pinkeye,  
Cydectin Wormer.



BG40



BG41  
Reg # 219580  
DOB 2/2/2023  
BW +1.0    WW+13    YW+21

100% FB  
Tattoo: BG41

— [MCMARSHALL M1151](#)  
— [WILKSHIRE MCM1151 931 1423](#)  
— [WILKSHIRE ZORBA 5537 931](#)

Sire: [CELEBRITY 1151 1355 1855](#)

— [OAKWOOD ZORBA 2](#)  
— [WILKSHIRE ZORBA 1116 1355](#)  
— [WILKSHIRE ZORBA2 88 1116](#)

I: [BG41](#)

— [CHEROKEE MAGIC](#)  
— [DZ CHEROKEE JACK](#)  
— [MCCLURKIN 54-513-722](#)

Dam: [BG BONNIE 05](#)

— [GLEN'S HALEY](#)  
— [GLEN'S 42](#)  
— [GLEN'S POWERHOUSE MACEY](#)

Consigned by Belyew Farms  
731-441-1730

Vaccinated with  
Vira Shield 6+V25 HB Somnus,  
Alpha -7 MB-1,  
Moraxella Pinkeye,  
Cydectin Wormer.



BG41



BG42  
Reg # 219581  
DOB 2/7/2023  
BW +1.4    WW+11    YW+20

100% FB  
Tattoo: BG42

— [LAZY S POWERHOUSE](#)  
— [GLEN'S POWERHOUSE LANCELOT](#)  
— [DOLL'S C INTRIGUE](#)

Sire: [JB POWERHOUSE INVADER](#)

— [HTF IMA HOSS TOO](#)  
— [J.B.'S ROSE](#)  
— [J.M.'S ROSE](#)

I: [BG42](#)

— [CHEROKEE MAGIC](#)  
— [DZ CHEROKEE JACK](#)  
— [MCCLURKIN 54-513-722](#)

Dam: [JB'S CHEROKEE LUCY 78](#)

— [DOLL'S C SABER](#)  
— [GLEN'S BELLA](#)  
— [DOLL'S C INTRIGUE](#)

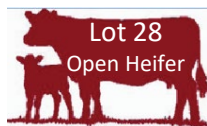
Consigned by Belyew Farms  
731-441-1730

Vaccinated with  
Vira Shield 6+V25 HB Somnus,  
Alpha -7 MB-1,  
Moraxella Pinkeye,  
Cydectin Wormer.



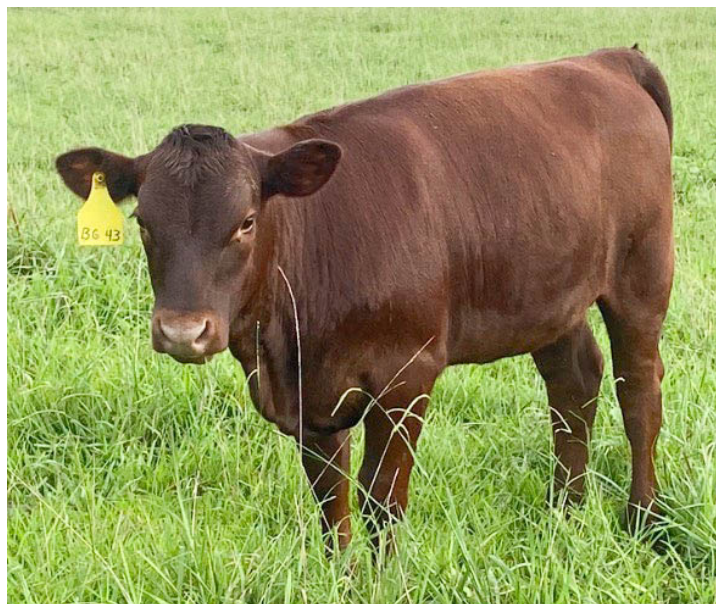
BG42





BG43  
Reg # 219582  
DOB 2/7/2023  
BW +1.7 WW+12 YW+20

100% FB  
Tattoo: BG43  
BW: 78



BG43

— [LAZY S POWERHOUSE](#)  
— [GLEN'S POWERHOUSE LANCELOT](#)  
— [DOLL'S C INTRIGUE](#)

Sire: [JB POWERHOUSE INVADER](#)

— [HTF IMA HOSS TOO](#)  
— [J.B.'S ROSE](#)  
— [J.M'S ROSE](#)

: [BG43](#)

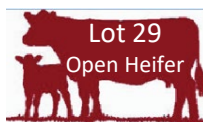
— [CHEROKEE MAGIC](#)  
— [DZ CHEROKEE JACK](#)  
— [MCCLURKIN 54-513-722](#)

Dam: [JB'S CHEROKEE PAM 79](#)

— [MC'S TOP JOB](#)  
— [MC'S ERIN](#)  
— [MC'S ANNIE](#)

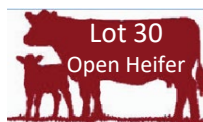
**Consigned by Belyew Farms**  
**731-441-1730**

Vaccinated with  
Vira Shield 6+V25 HB Somnus,  
Alpha -7 MB-1,  
Moraxella Pinkeye,  
Cydectin Wormer.



TRP PWRHSE Potential 014 100% FB  
Reg # 219588  
DOB 2/15/2023  
BW +1.1 WW+10 YW+18

Tattoo: T211  
BW: 81



TRP PWRHSE Promise 009 100% FB  
Reg # 219586  
DOB 2/21/2023  
BW +1.5 WW+13 YW+23

Tattoo: T243  
BW: 80

— [LAZY S POWERHOUSE](#)  
— [GLEN'S POWERHOUSE LANCELOT](#)  
— [DOLL'S C INTRIGUE](#)

Sire: [JB POWERHOUSE CELEBRITY 14](#)

— [WILKSHIRE PROMISE 5101 1206](#)  
— [CELEBRITY F 1223 1520](#)  
— [WILKSHIRE SUPERSIRE 9103 1223](#)

I: [TRP PWRHSE POTENTIAL 014](#)

— [SHUTER'S MAGIC STICK](#)  
— [CHEROKEE MAGIC](#)  
— [OC SHOWTIME MISS](#)

Dam: [DZ CHEROKEE JAN](#)

— [MCCLURKIN MR. B 54](#)  
— [MCCLURKIN 54-510-719](#)  
— [MCCLURKIN C MOLLY](#)

**Consigned by Taylor Land & Cattle**  
**901-338-9686**

Potential is a Shuter bred heifer with an extremely low birth weight in her family. This is a heifer that I find hard to part with. Vaccinated with Triangle 10 HB Bovilis 20/20 Vision with Spur and OCU Guard MB.

— [LAZY S POWERHOUSE](#)  
— [GLEN'S POWERHOUSE LANCELOT](#)  
— [DOLL'S C INTRIGUE](#)

Sire: [JB POWERHOUSE CELEBRITY 14](#)

— [WILKSHIRE PROMISE 5101 1206](#)  
— [CELEBRITY F 1223 1520](#)  
— [WILKSHIRE SUPERSIRE 9103 1223](#)

I: [TRP PWRHSE PROMISE 009](#)

— [MC'S WILLIE](#)  
— [MC'S TOP JOB](#)  
— [W.K. 16](#)

Dam: [MC'S ERIN](#)

— [SMALL ACRES INVADER GR27](#)  
— [MC'S ANNIE](#)  
— [DANIEL'S PROSPECT LOU](#)

**Consigned by Taylor Land & Cattle**  
**901-338-9686**

This is the last heifer from a top herd producer. She is a very balanced, compact heifer who should add value to any herd. Vaccinated with Triangle 10 HB Bovilis 20/20 Vision with Spur and OCU Guard MB.



BG47  
Reg # 219583  
DOB 3/13/2023  
BW +1.4 WW+14 YW+23

100% FB  
Tattoo: BG47  
BW: 70



BG47

— [MCMARSHALL M1151](#)  
— [WILKSHIRE MCM1151 931 1423](#)  
— [WILKSHIRE ZORBA 5537 931](#)

Sire: [CELEBRITY 1151 1355 1855](#)

— [OAKWOOD ZORBA 2](#)  
— [WILKSHIRE ZORBA 1116 1355](#)  
— [WILKSHIRE ZORBA2 88 1116](#)

I: [BG47](#)

— [LAZY S POWERHOUSE](#)  
— [GLEN'S POWERHOUSE LANCELOT](#)  
— [DOLL'S C INTRIGUE](#)

Dam: [JB POWERHOUSE ALISA 100](#)

— [SPEGAL'S MARC](#)  
— [E KAY](#)  
— [MC'S E.KATE](#)

**Consigned by Belyew Farms**  
**731-441-1730**

Vaccinated with  
Vira Shield 6+V25 HB Somnus,  
Alpha -7 MB-1,  
Moraxella Pinkeye,  
Cydectin Wormer.



This sale will be conducted under the Red Poll Breeding Guarantee.

## **Rule 20. Red Poll Breeding Guarantee Guideline**

### **A. Breeding Guarantee**

1. The breeding guarantee shall constitute a contract between the seller and buyer of each animal sold at public or private sale, except for that in the case of complete Dispersal Sales, the seller may choose between selling and not selling under the Breeding Guarantee.
2. Proper care must be given by the purchaser to protect breeding qualities and health of guaranteed animals.

### **B. Bulls**

1. Bulls sold as separate lots are guaranteed breeders. Provided the following:
  - a. Bulls are not allowed to serve until 14 months of age.
  - b. Or allowed to run with the herd until 20 months of age.
  - c. Notice of failure to settle cows is given within six (6) months of purchase or six (6) months after bull becomes serviceable age.
2. Bull calves under 8 (eight) months of age sold at sides of dams are not guaranteed breeders.

### **C. Females**

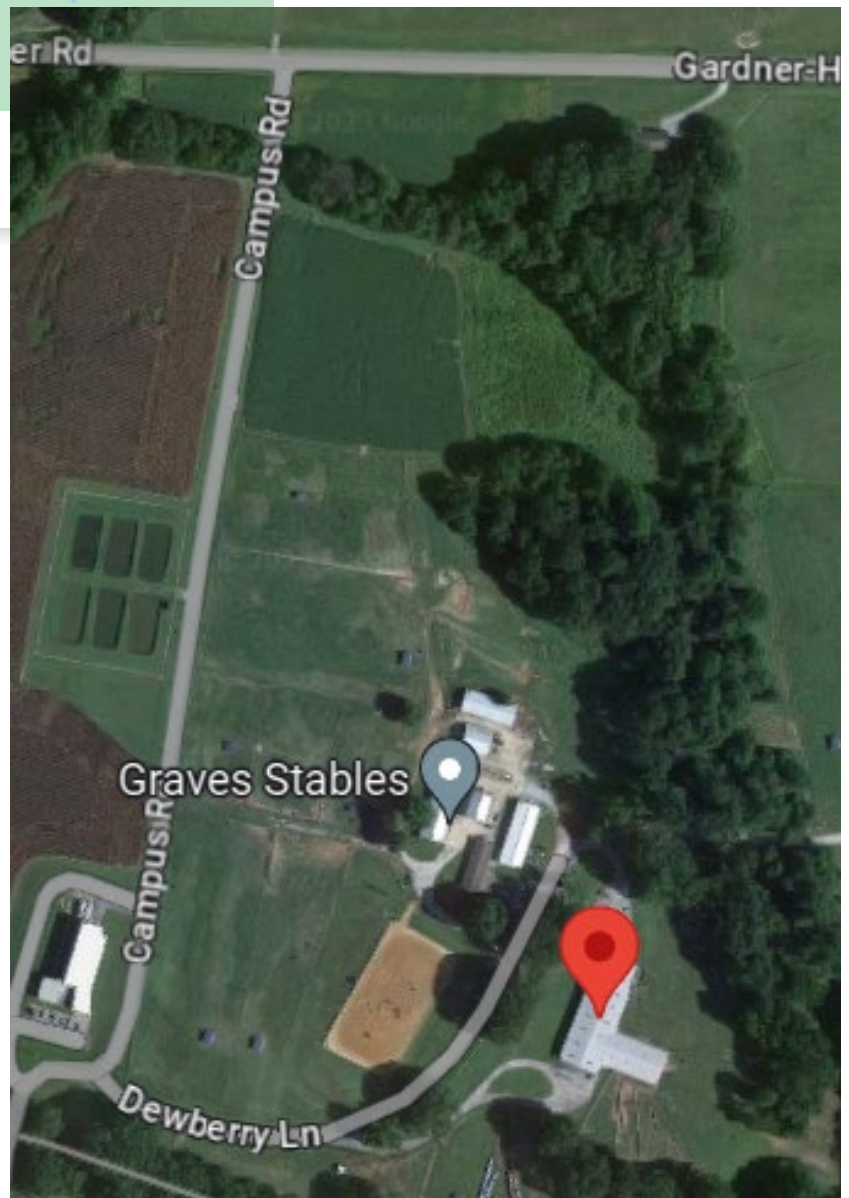
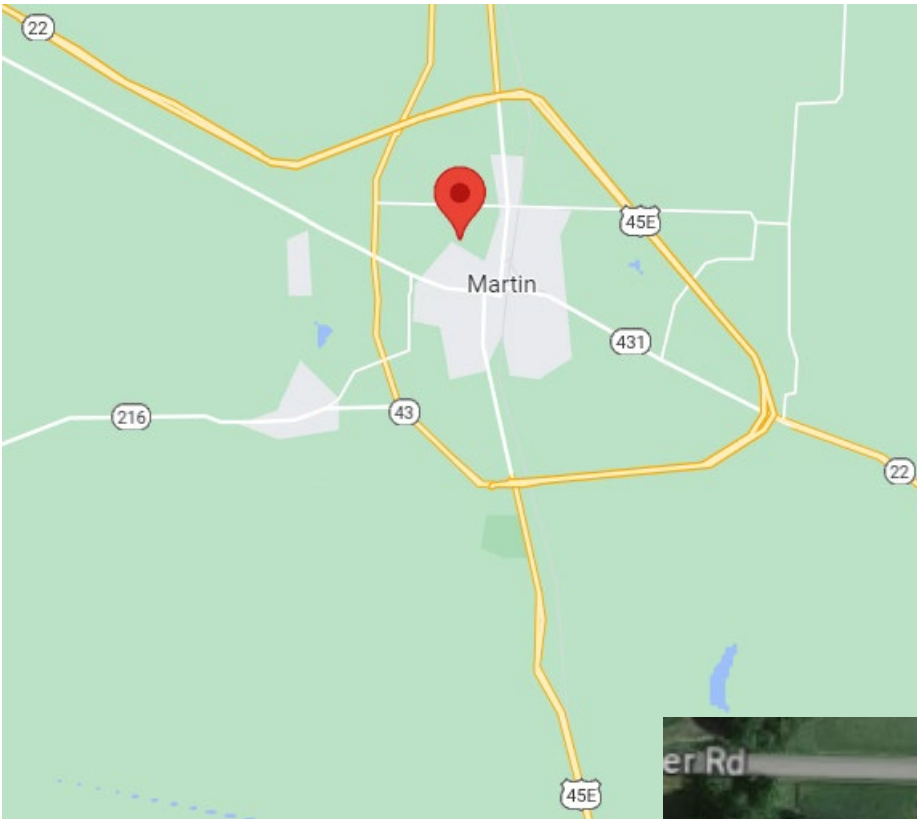
1. All females over 14 months of age, sold open, are guaranteed open and breeders.
  - a. If not settle in 6 (six) months, heifers shall be reported to seller.
  - b. Heifers under 14 months of age are to be open, and, if in calf, shall be reported promptly to the seller.
2. Females sold as bred animals, but not in calf, must be reported to seller within 3 (three) months of sale date.
3. Females bred within less than 8 (eight) months prior to date of sale are not guaranteed to be in calf but are guaranteed breeders.
4. Heifers under 8 (eight) months of age are not guaranteed breeders if sold at sides of dams.

### **D. Adjustments**

1. Seller may replace animal in question with another of equal value at time of purchase to the satisfaction of the buyer.
2. Or seller may refund purchase price. No interest, feed, transportation or fees to be charged to seller, Salvage goes to seller.
3. Seller may elect retrial period not to exceed 6 (six) months.
  - a. Transportation to be paid by seller
  - b. If animal proves to be a breeder, it shall be returned to purchaser at the expense of purchaser.
  - c. No feed, fees or maintenance charge will be made by either the buyer or seller.

Sale location: Smith Livestock Center - 150 Campus Rd, Martin, TN 38237

See red markers below.



*Registered Red Poll*  
[www.littlecreekfarmal.com](http://www.littlecreekfarmal.com)